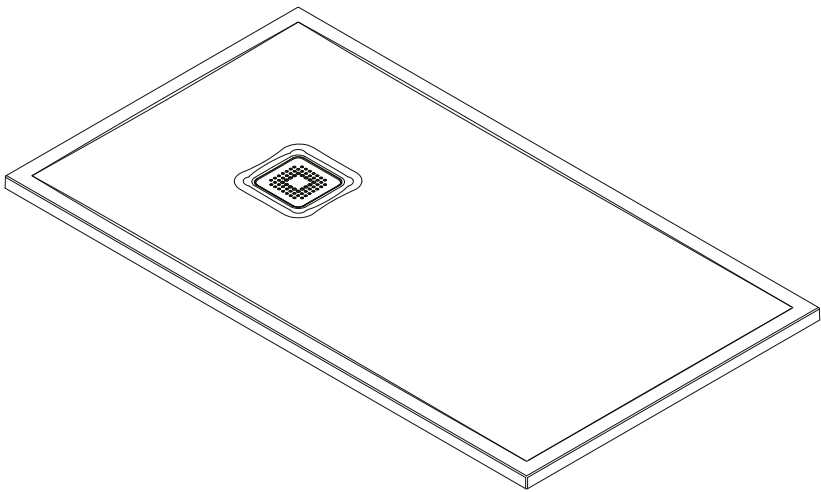




COALBROOK



INSTALLATION & AFTERCARE GUIDE

BAY SHOWER TRAYS

04 PRE-VERIFICATION

INSTALLATION GUIDE

06 Flush with floor installation

11 On floor installation

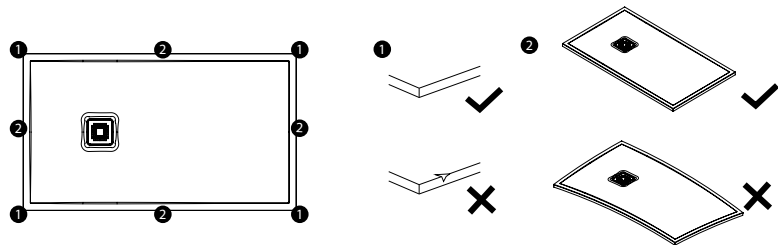
16 On feet installation

29 CUTTING GUIDE

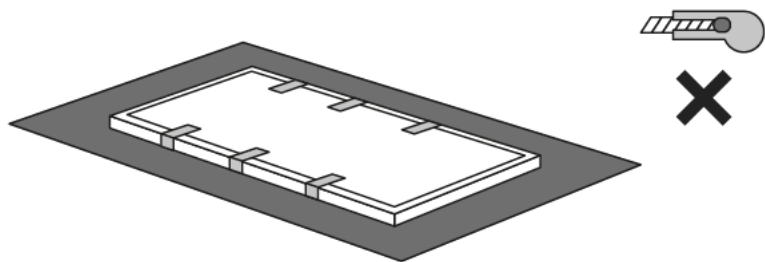
34 AFTERCARE GUIDE

PRE-VERIFICATION

Firstly, you should check that the condition of the shower tray is how it should be. You should check that the colour, model and texture of the tray are correct as once the shower tray has been installed, we cannot accept any returns.

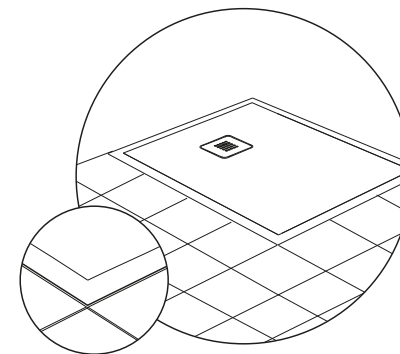


Store the shower tray horizontally, be careful not to scratch or damage the shower tray.

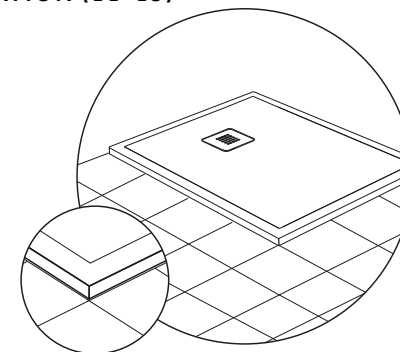


INSTALLATION GUIDE

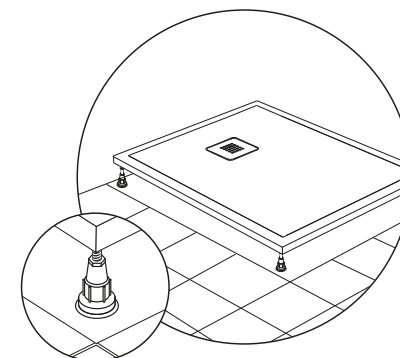
FLUSH WITH FLOOR INSTALLATION (6-10)



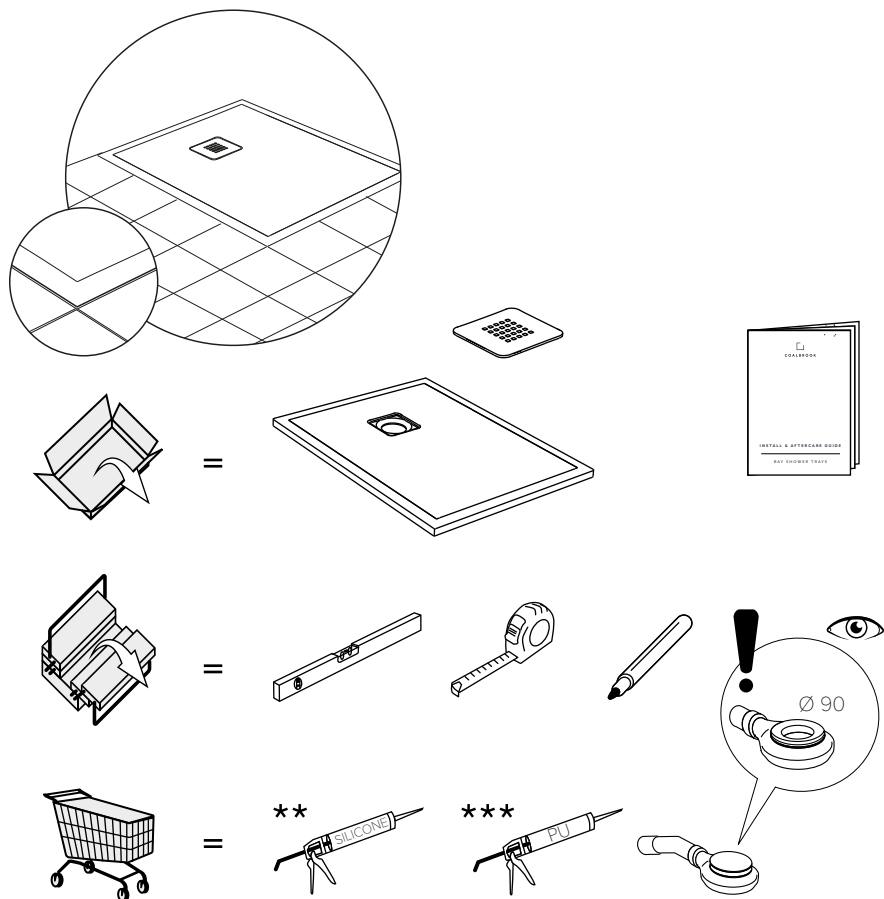
ON FLOOR INSTALLATION (11-15)



ON FEET INSTALLATION (16-28)



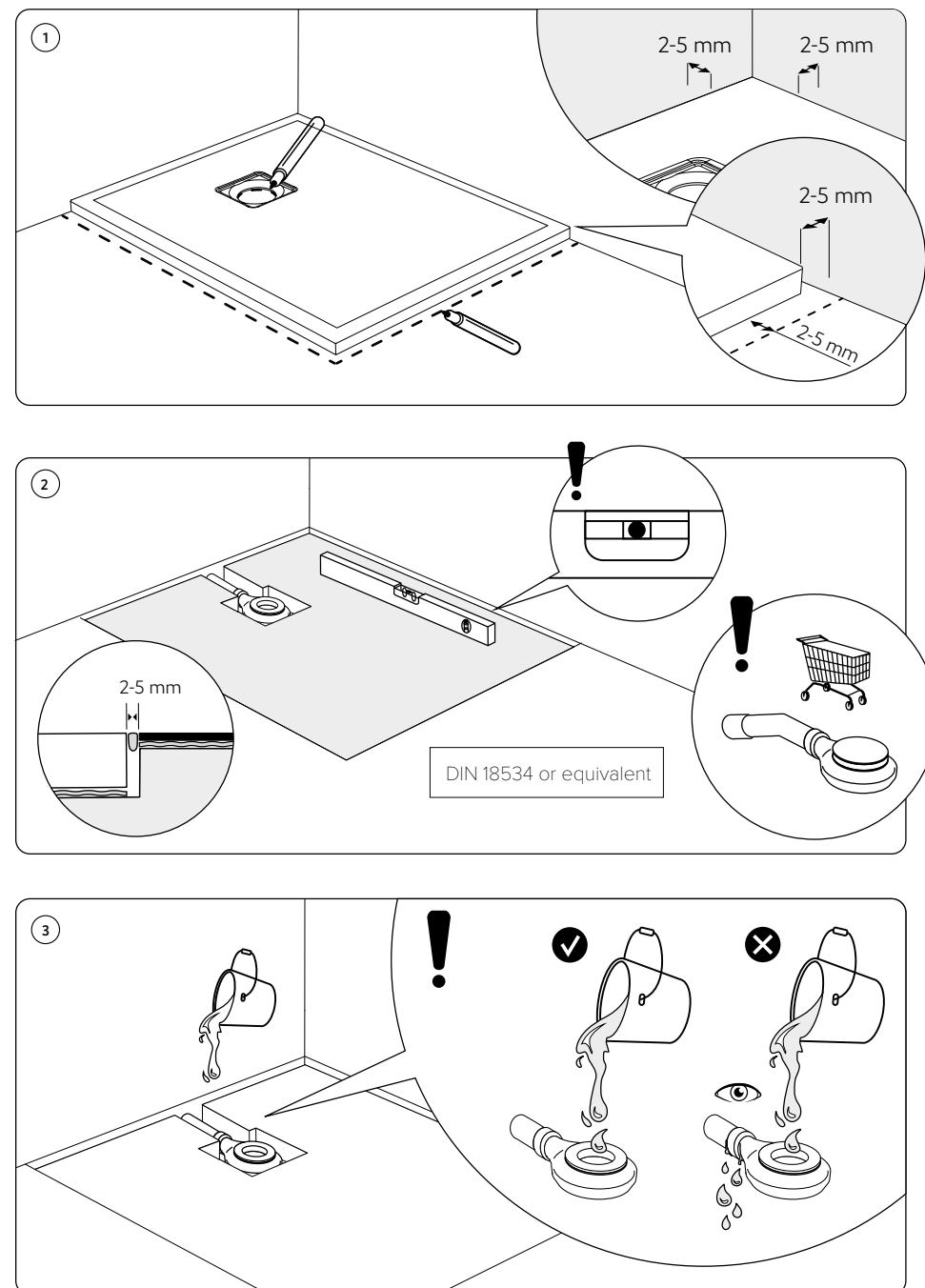
FLUSH WITH FLOOR INSTALLATION



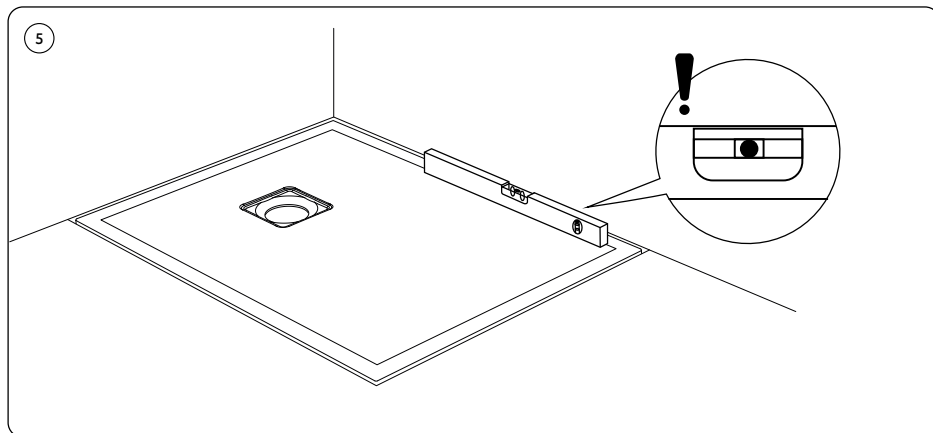
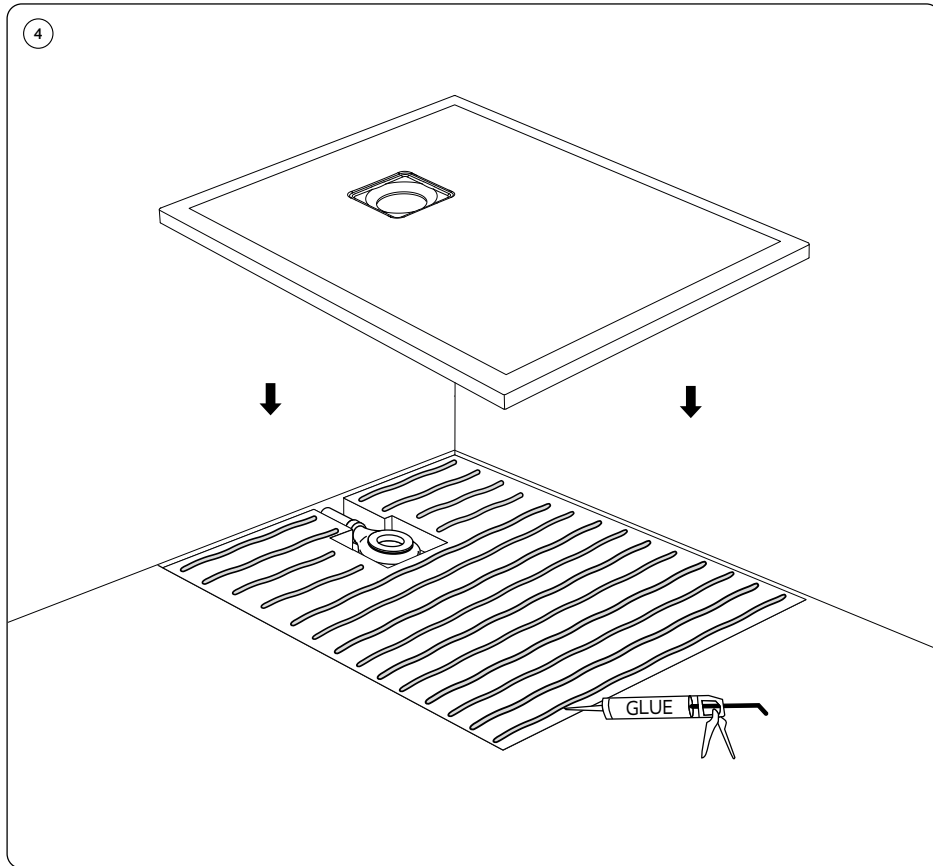
** Silicone

*** We recommend elastic glue based on polyurethane.
Note! Do not use any glue based on cement.

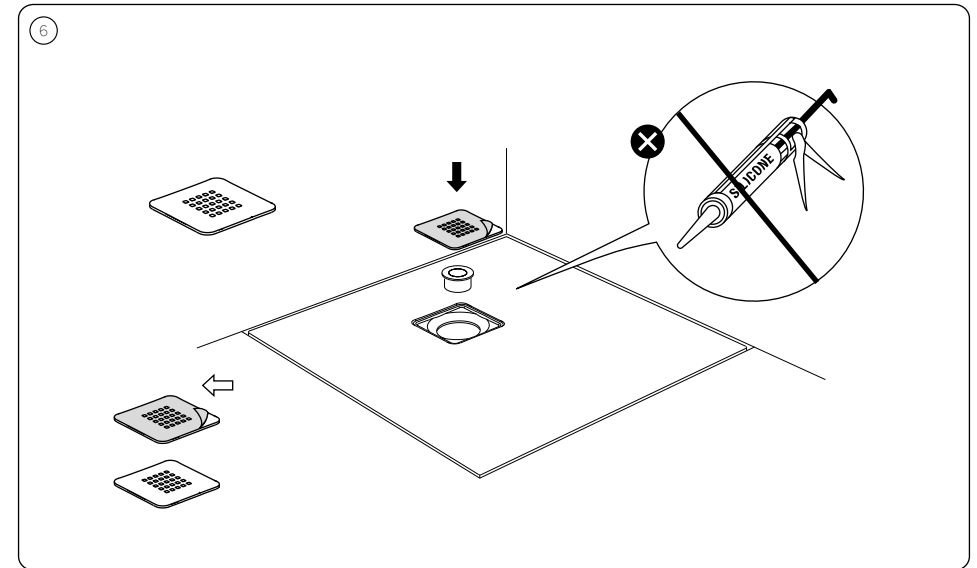
FLUSH WITH FLOOR INSTALLATION



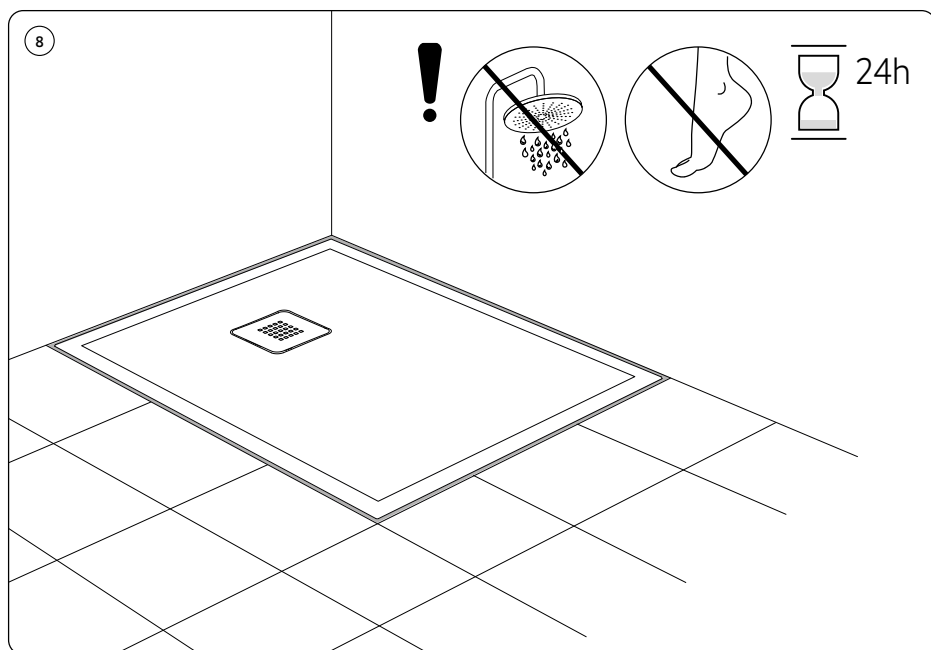
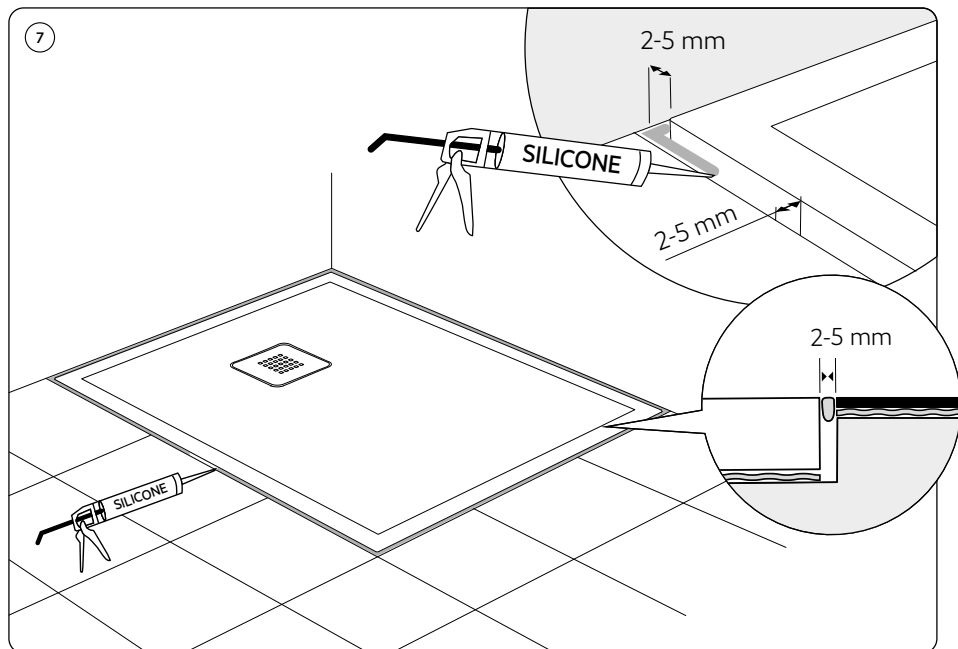
FLUSH WITH FLOOR INSTALLATION



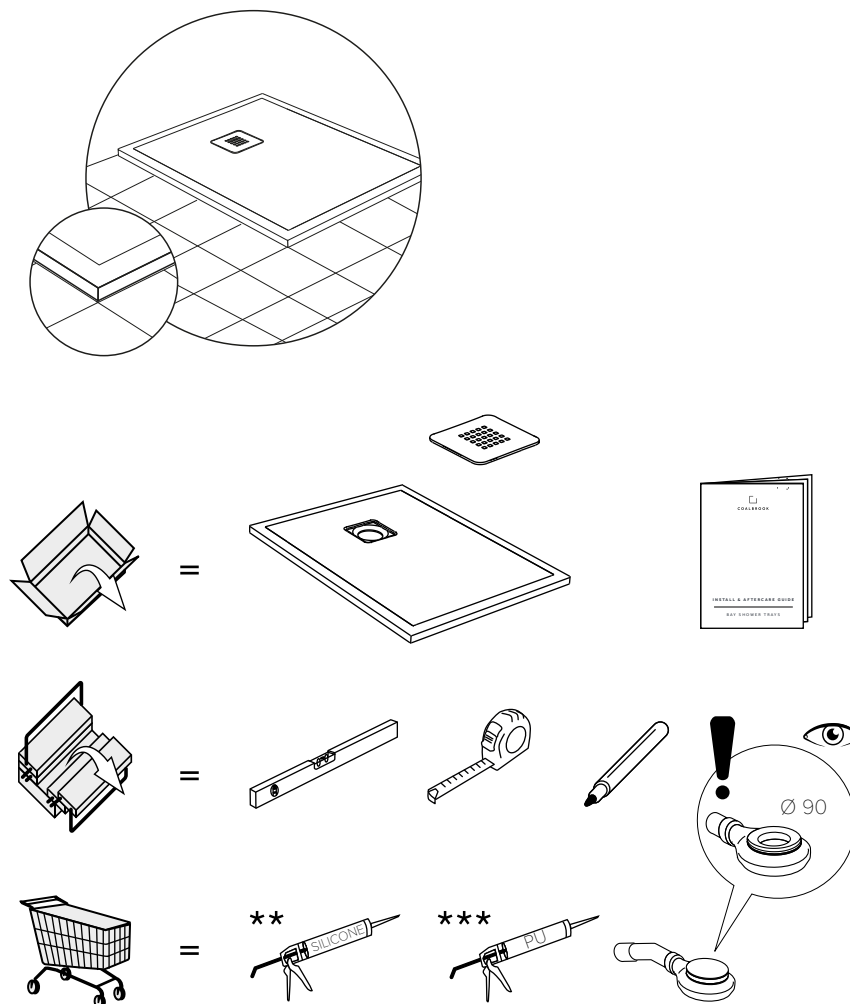
FLUSH WITH FLOOR INSTALLATION



FLUSH WITH FLOOR INSTALLATION

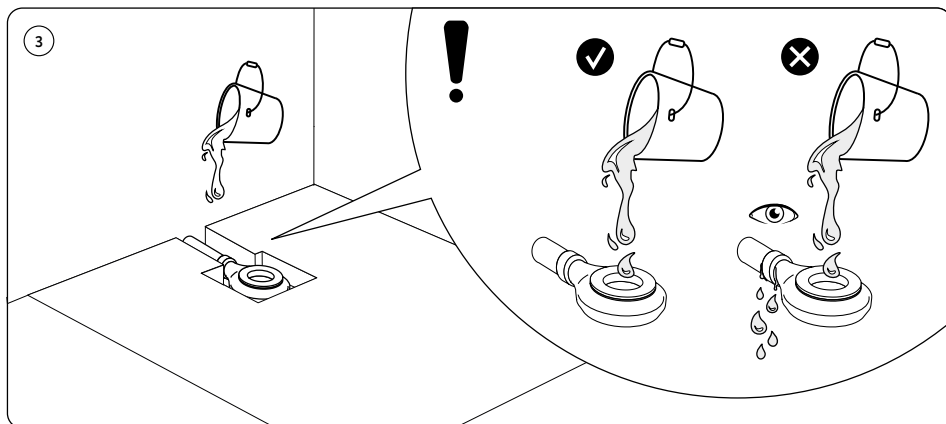
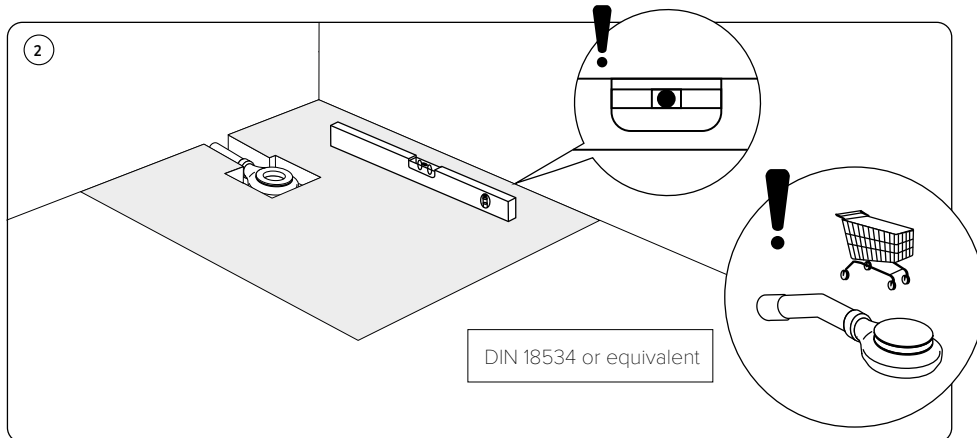
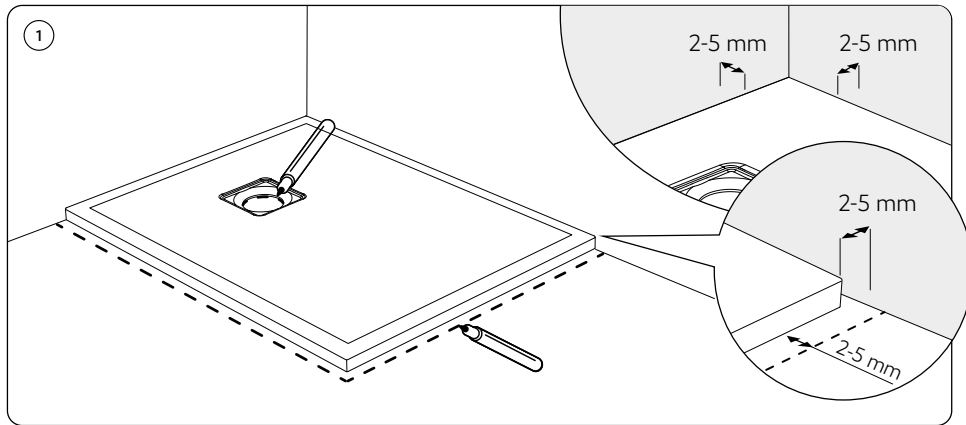


ON FLOOR INSTALLATION

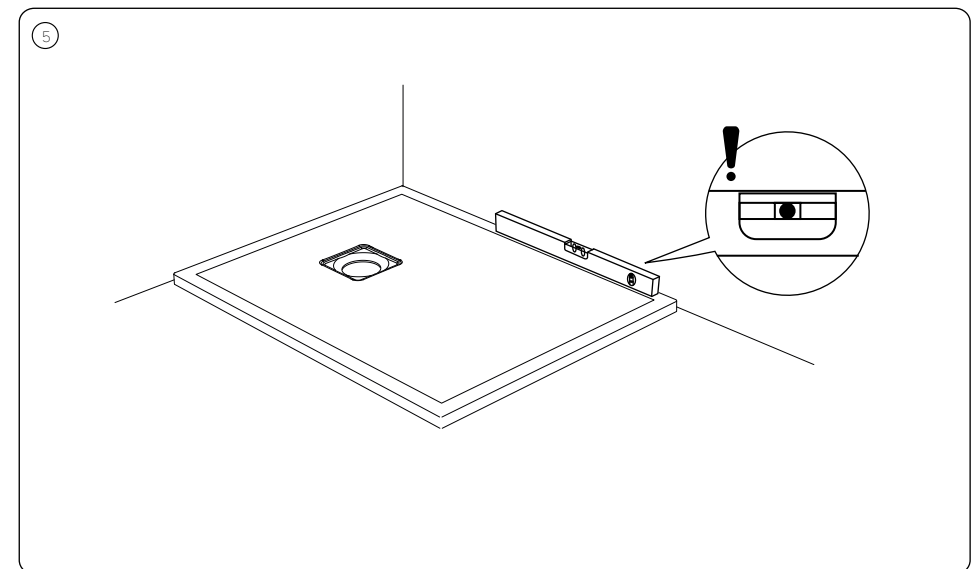
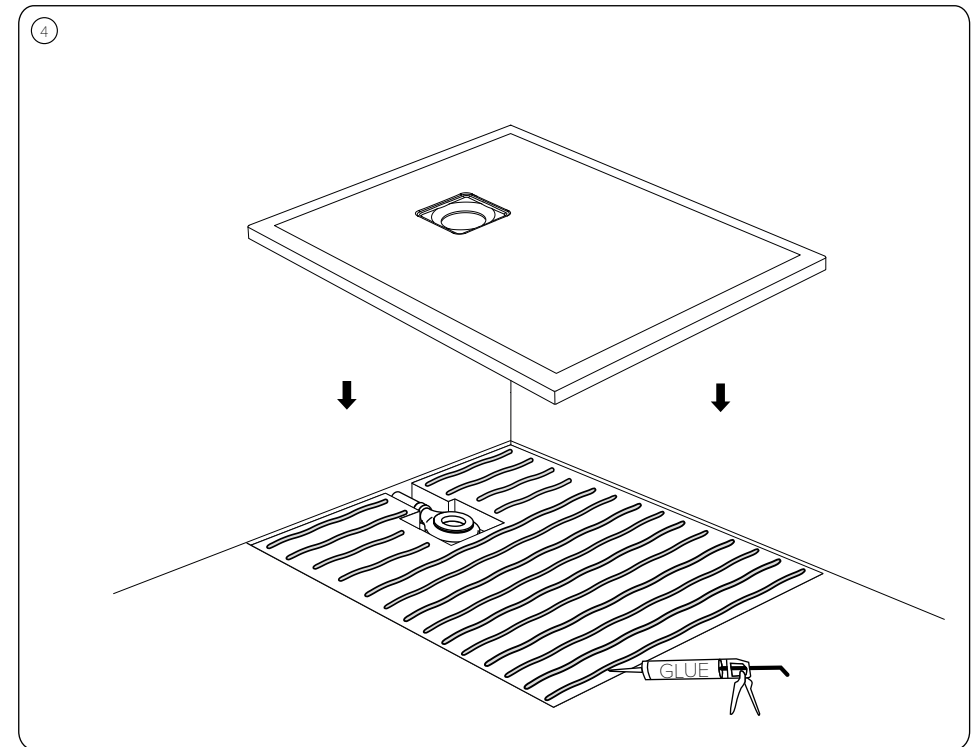


- ** Silicone
 *** We recommend elastic glue based on polyurethane.
 Note! Do not use any glue based on cement.

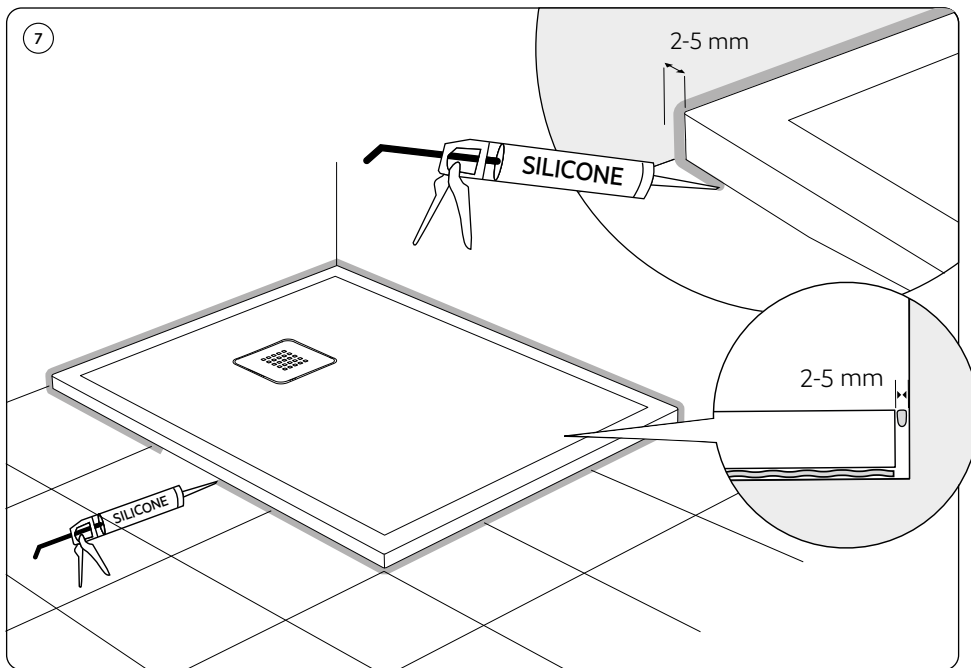
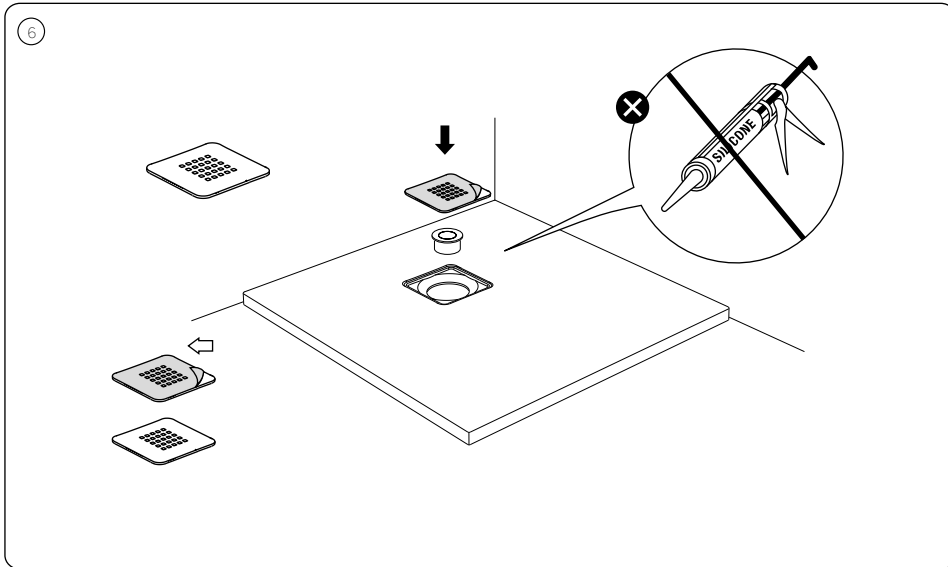
ON FLOOR INSTALLATION



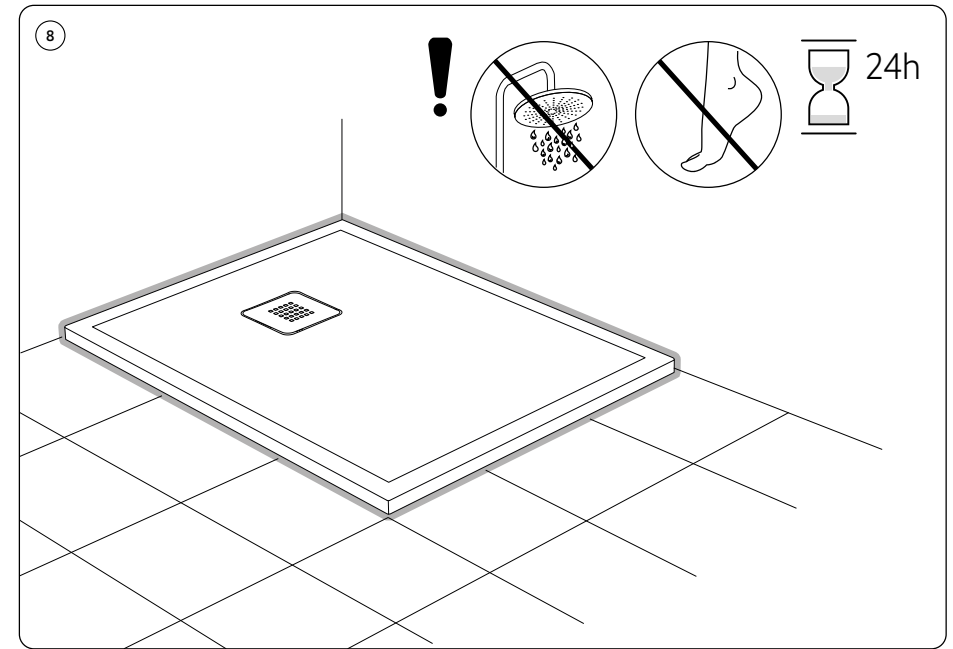
ON FLOOR INSTALLATION

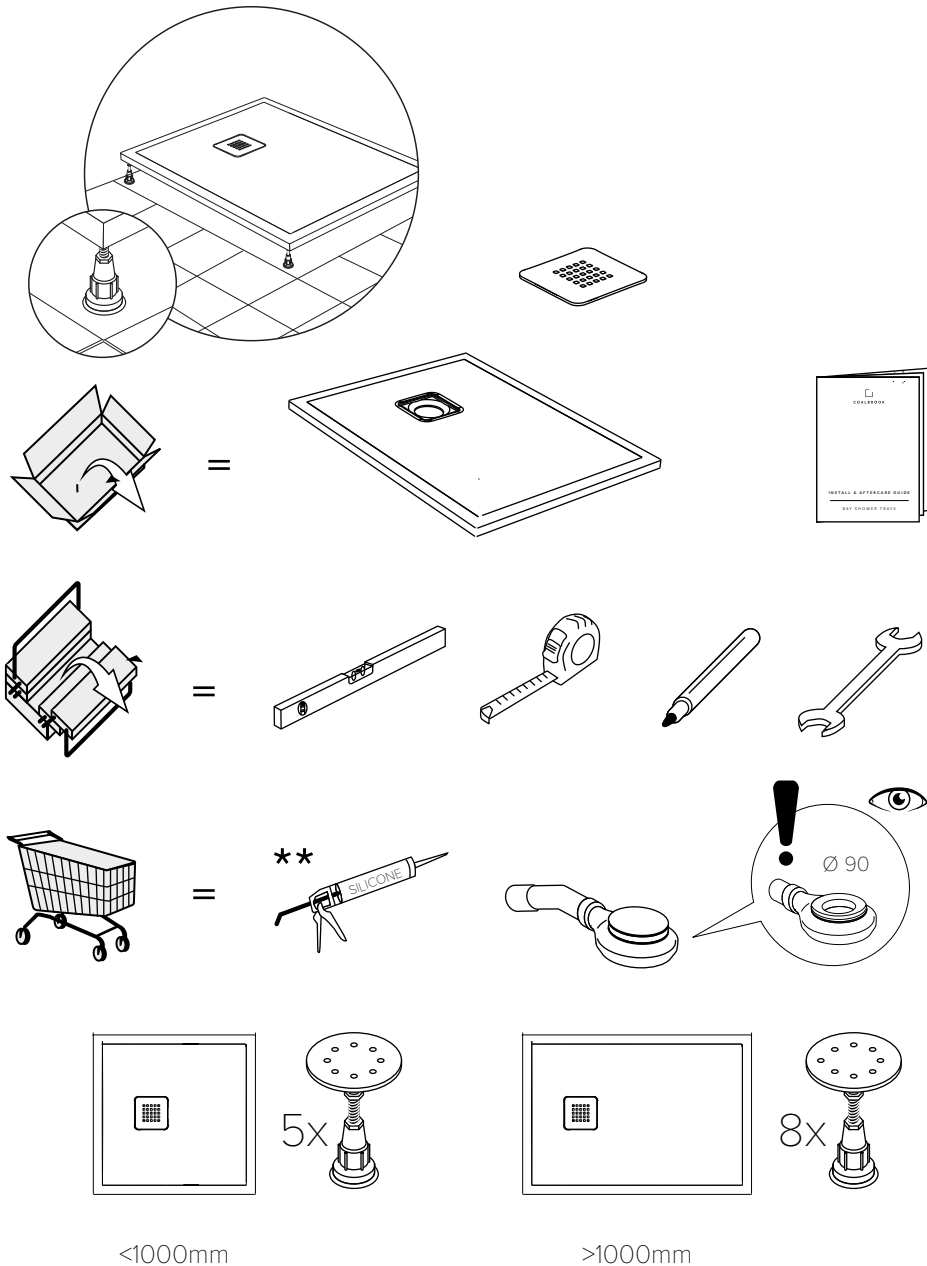


ON FLOOR INSTALLATION



ON FLOOR INSTALLATION





<1000mm

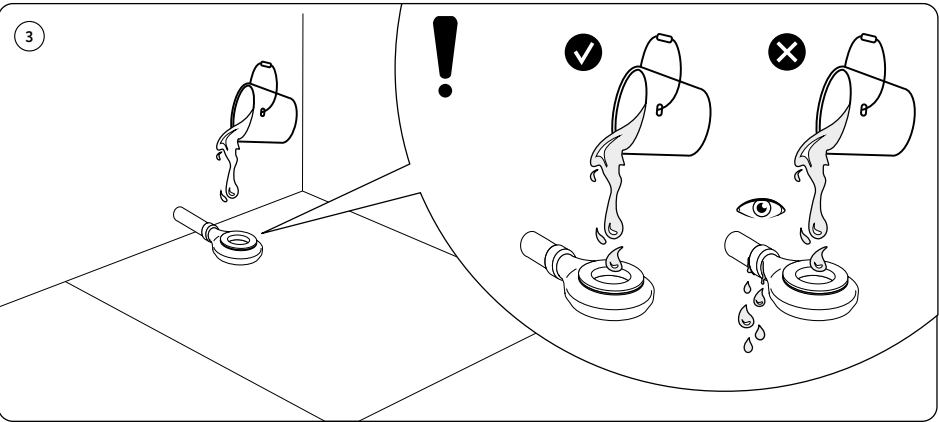
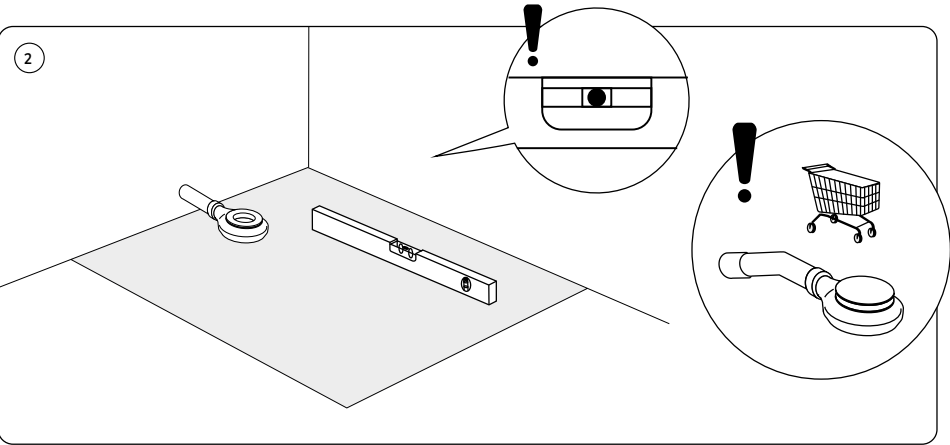
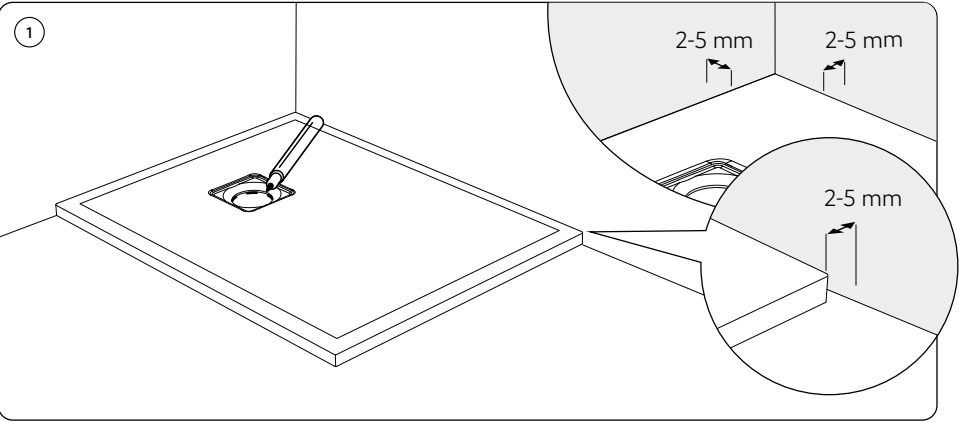
>1000mm

** Silicone

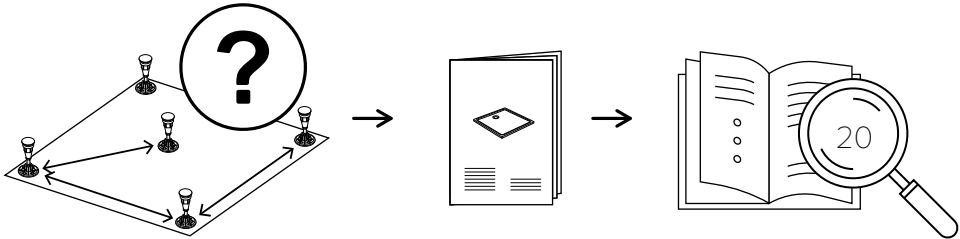
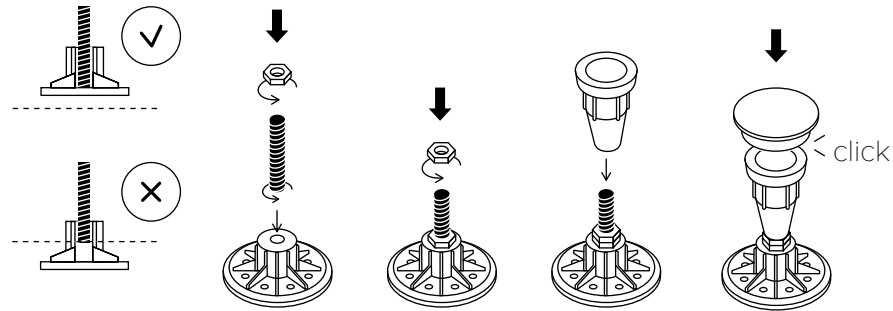
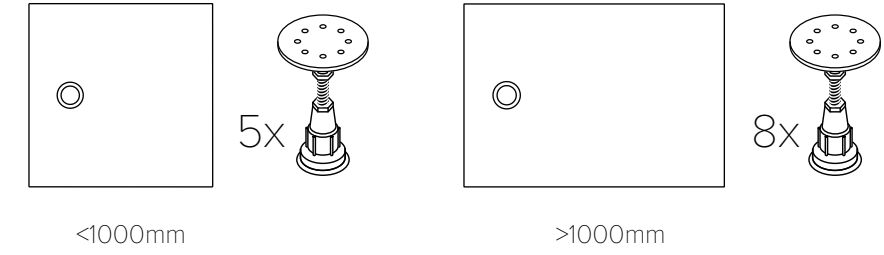
Guidelines for shower tray installation on feet

1. Before bonding the feet to the shower tray, identify the foot bonding locations underneath the shower tray according to this instruction.
2. Before installing the shower tray, use degreasing wipes to wipe clean the areas on the shower tray where the feet will be bonded, and each foot top that will pair with the shower tray. Apply the 3M VHB double-sided adhesive tape (provided) to the foot tops only when the surfaces are degreased and cleaned with degreasing wipes.
3. The feet should be installed in accordance with the instructions in section C of this manual.
4. Keep the work place clean and dry during bonding. If the surfaces cleaned with degreasing wipes become dirty or polluted with dust before bonding, repeat the cleaning with the wipes. The paired surfaces will only bond securely and durably if properly cleaned and degreased with the wipes.
5. Once the feet have been bonded underneath the shower tray, stand the shower tray on its feet and leave it for 30 minutes for the adhesive tape to develop a grip before proceeding with the installation process.
6. Once the feet have been bonded underneath the shower tray, do not tilt the shower tray so that it rests or becomes loaded on or to its sides; the load must act on the bonded feet along their height only.
7. Do not slide the shower tray with its feet bonded underneath along a longer distance. Lift and carry the shower tray when relocating it. You may only slide the shower tray on its feet for a short distance when moving it against the wall.
8. This instruction is provided for the installation of the shower tray on its dedicated feet and on a hard floor (lined with tiles, concrete screed, etc.). There are many factors affecting the proper performance of this product, including different installation materials, substrates, the work environment, etc. Due to this, no perfect application efficiency can be guaranteed for all possible installation and operating conditions. The factors are known to the installer only, and within their reasonable control. The installer shall be solely liable for the proper installation of this product. Any damage or loss which may result during the installation or operation of this product due to non-compliance with the guidelines specified here in are not covered by the product warranty.

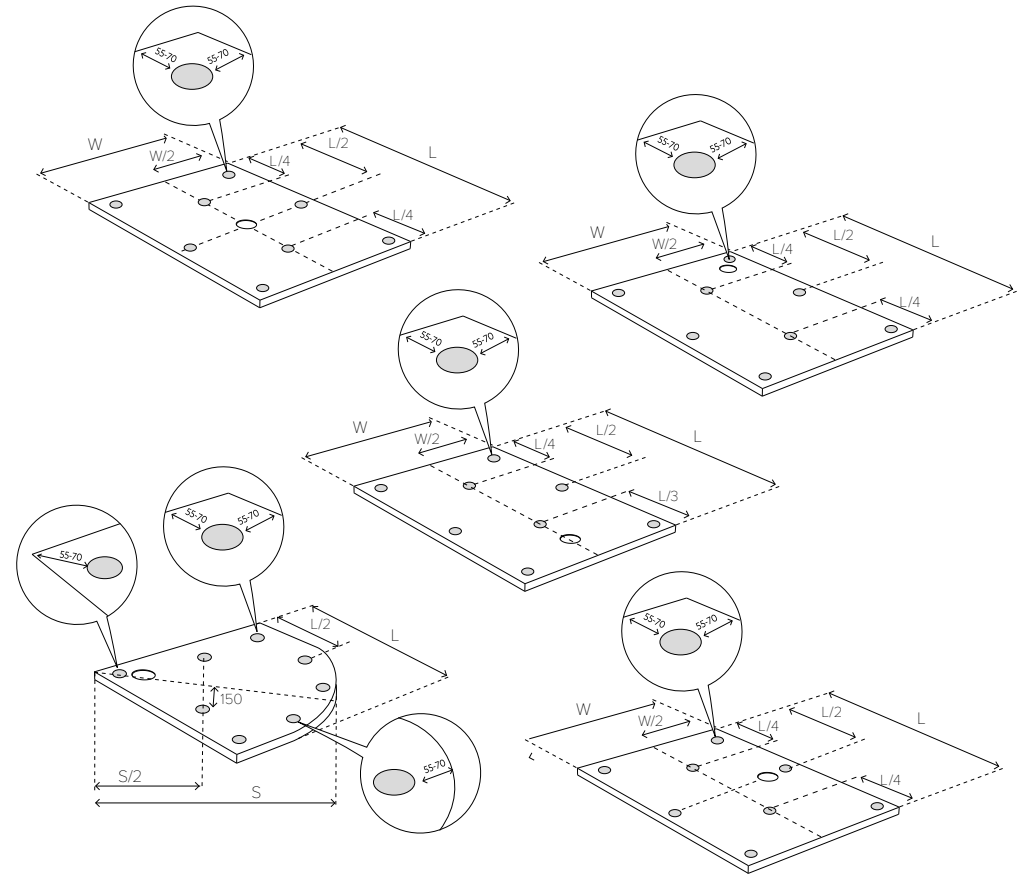
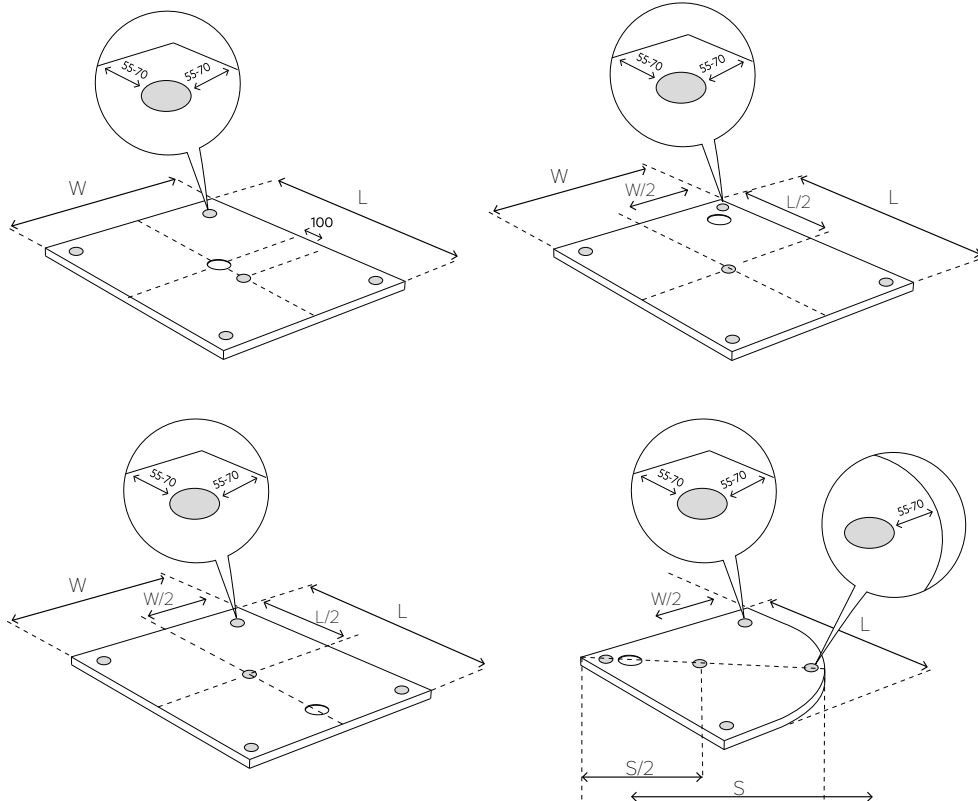
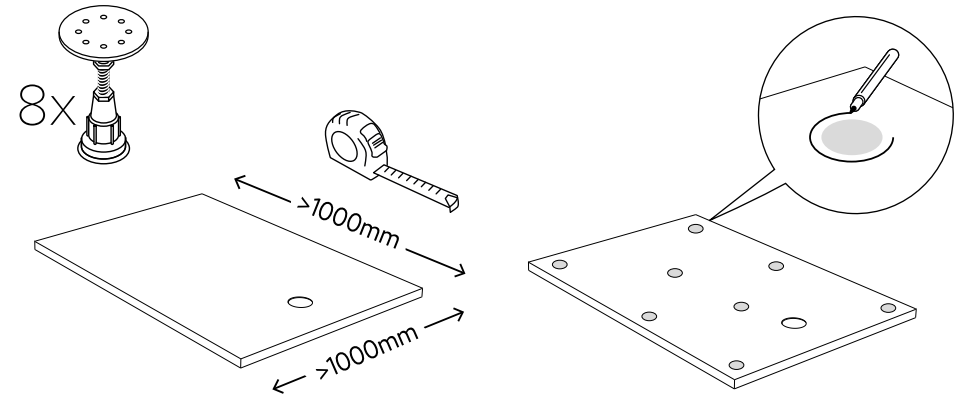
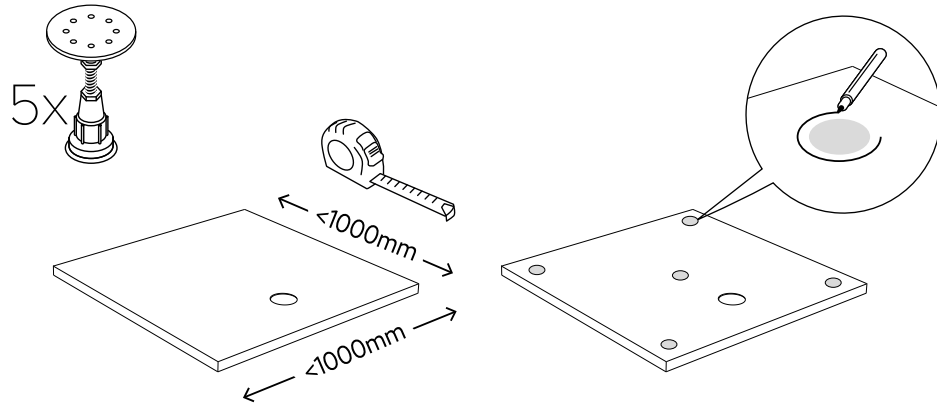
ON FEET INSTALLATION



ON FEET INSTALLATION

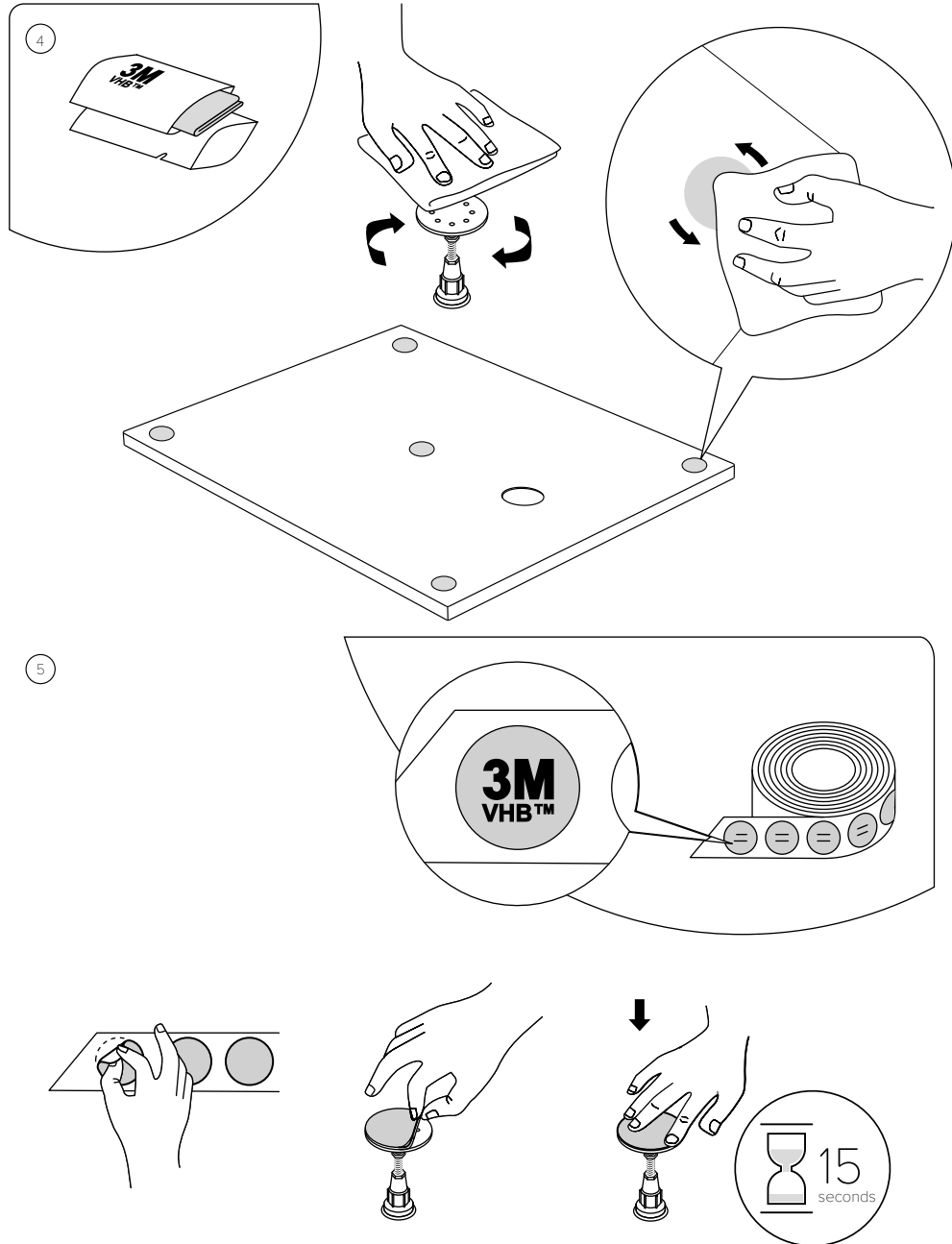


ON FEET INSTALLATION

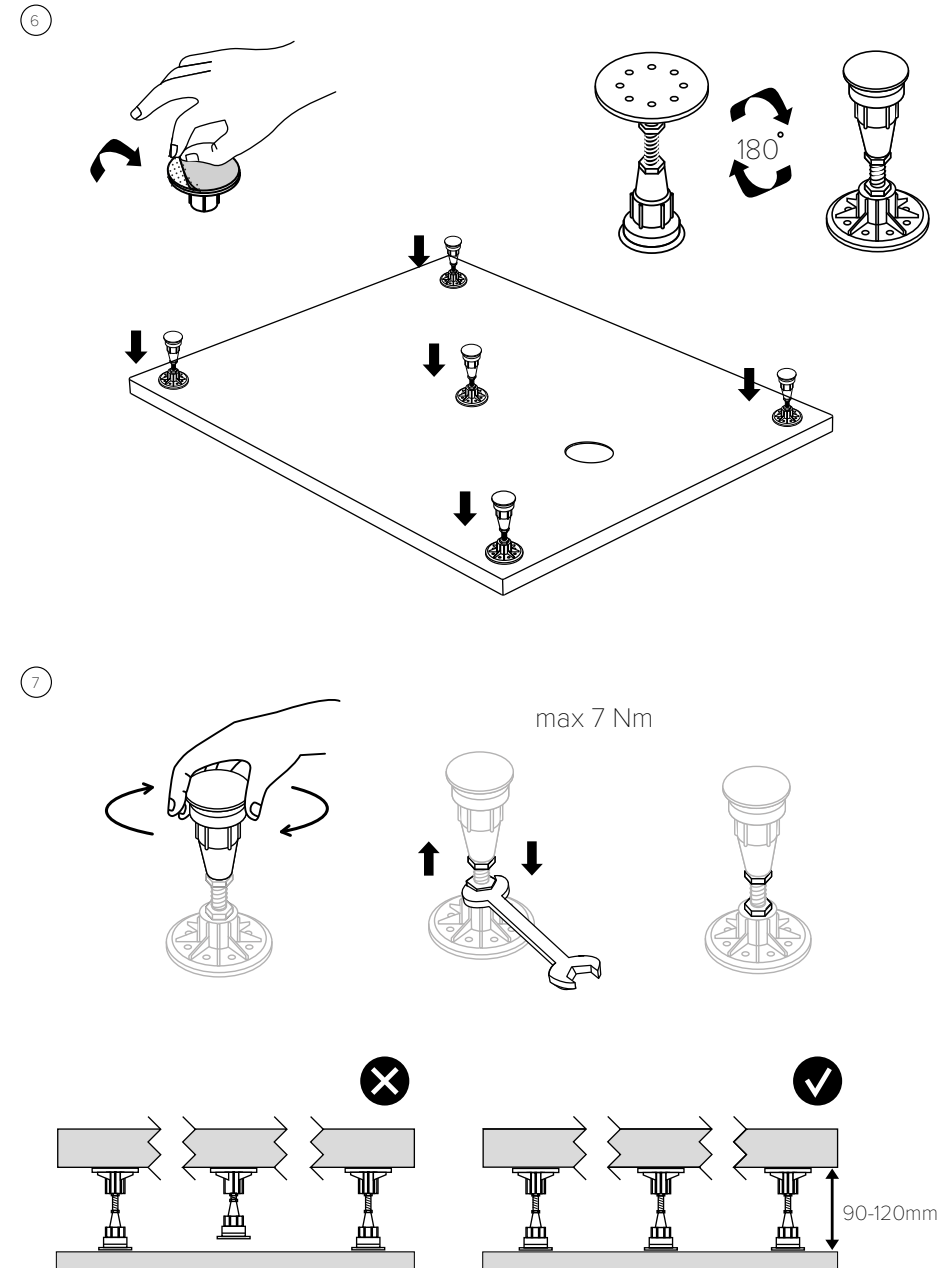


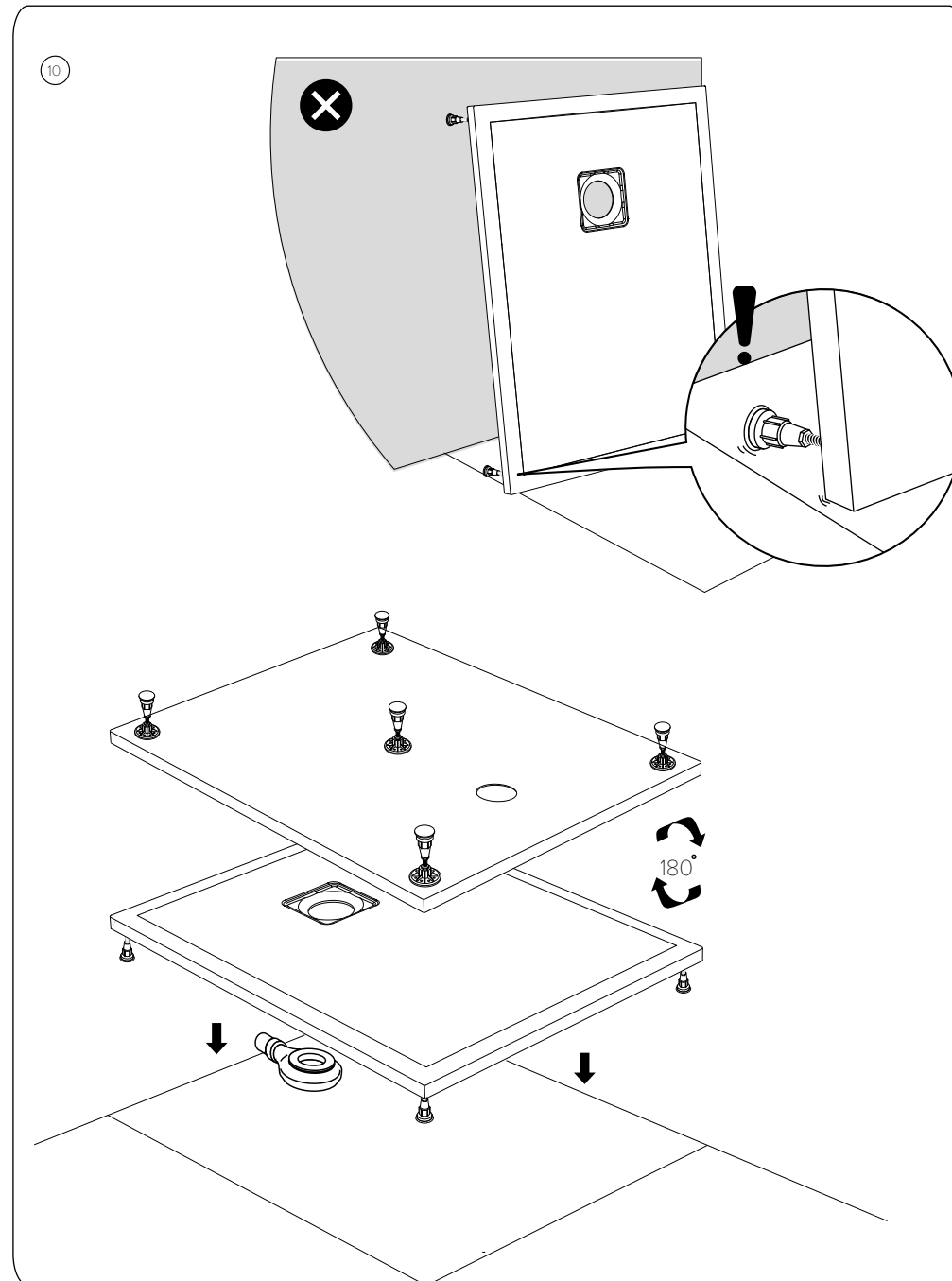
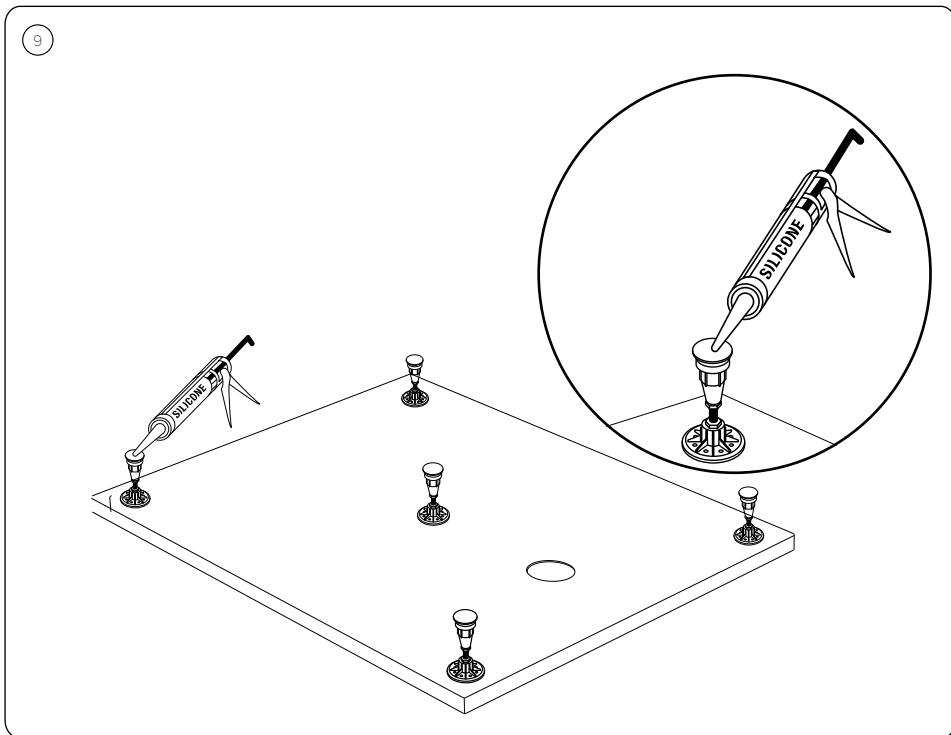
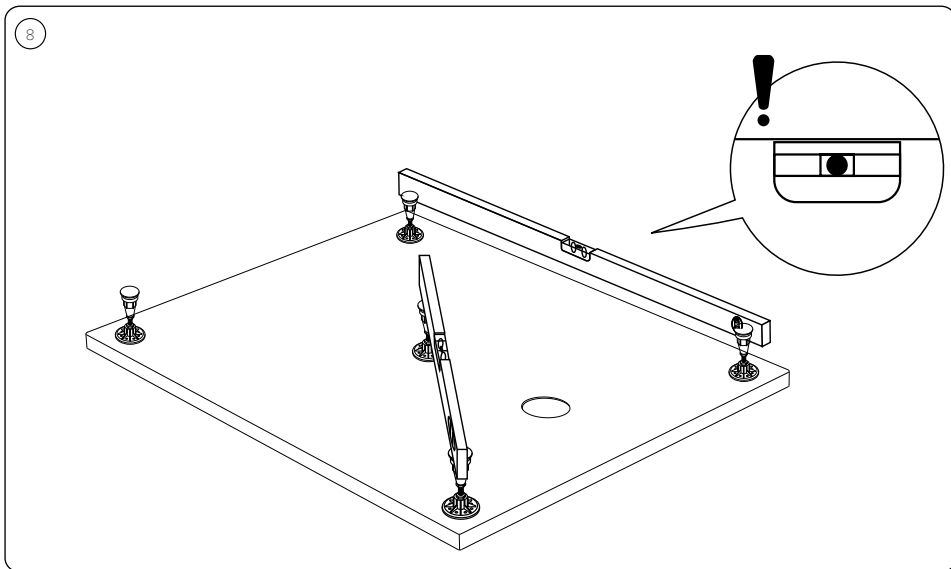
ON FEET INSTALLATION

ON FEET INSTALLATION

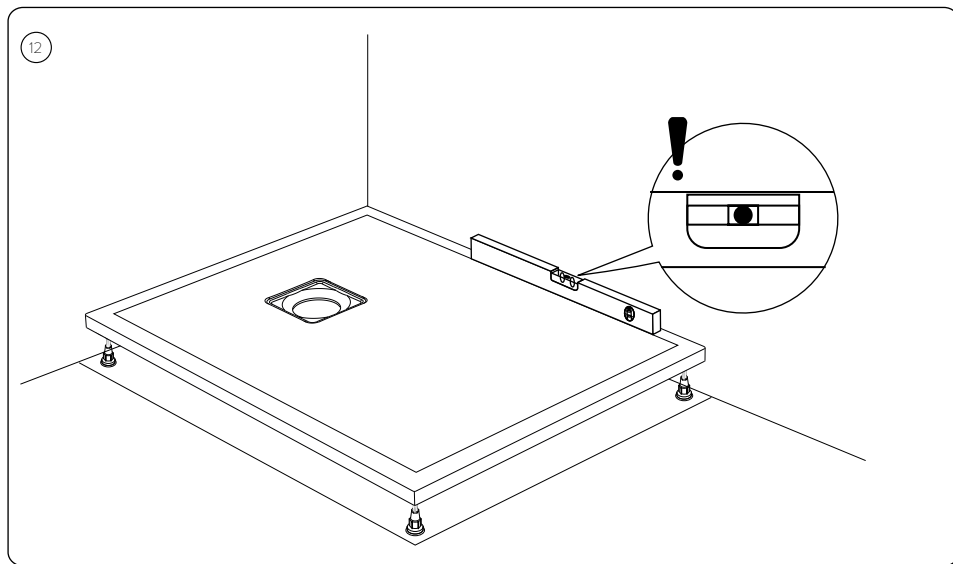
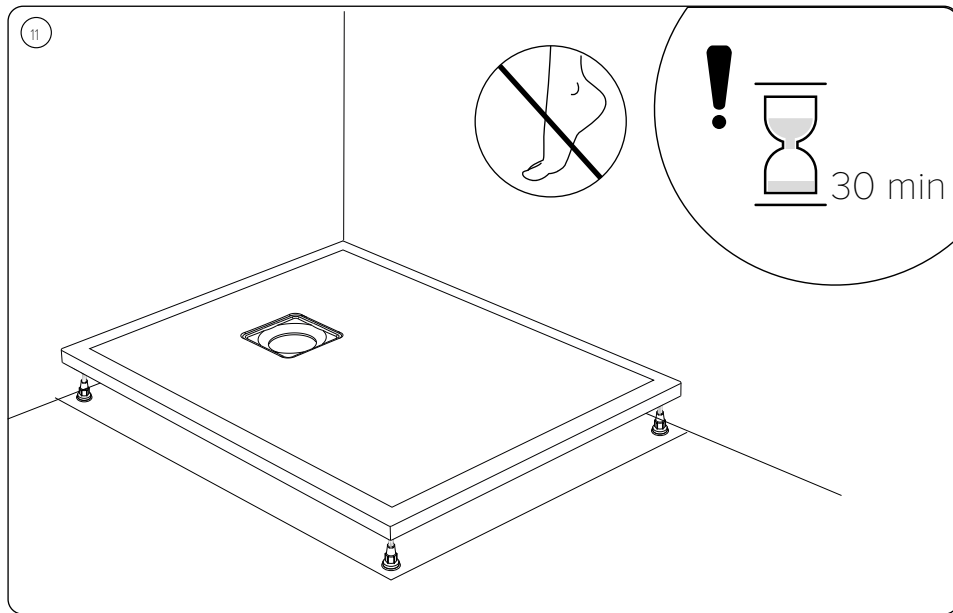


ON FEET INSTALLATION

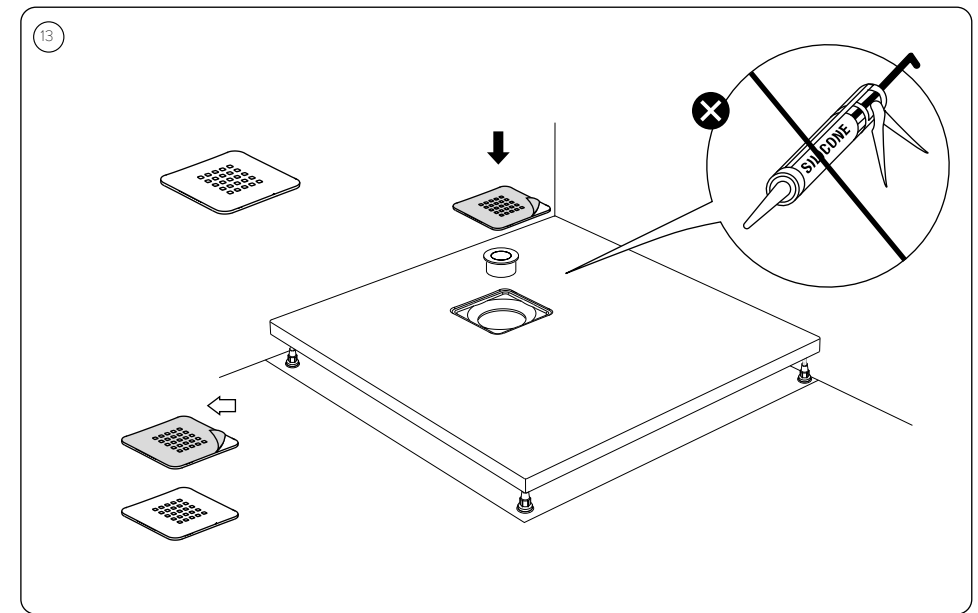




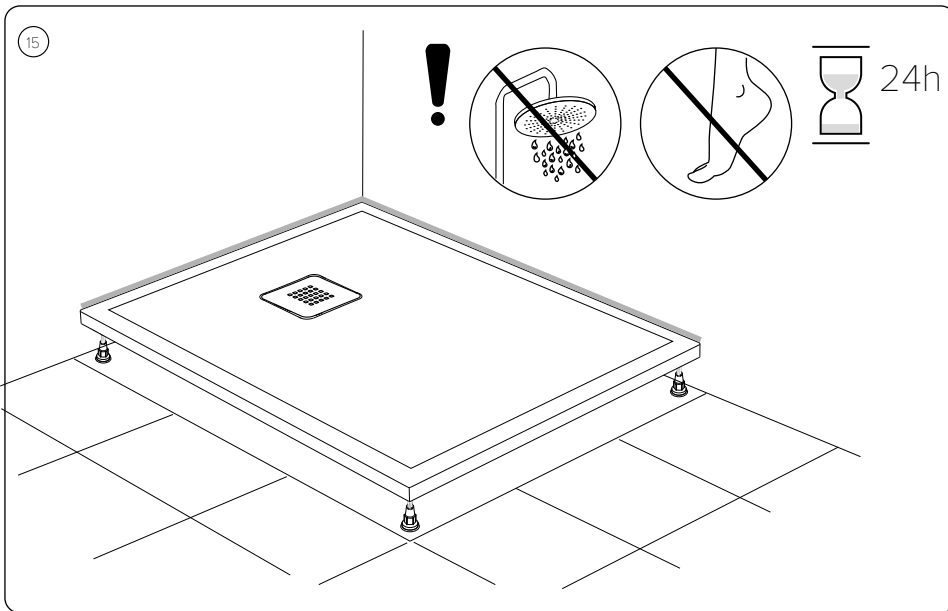
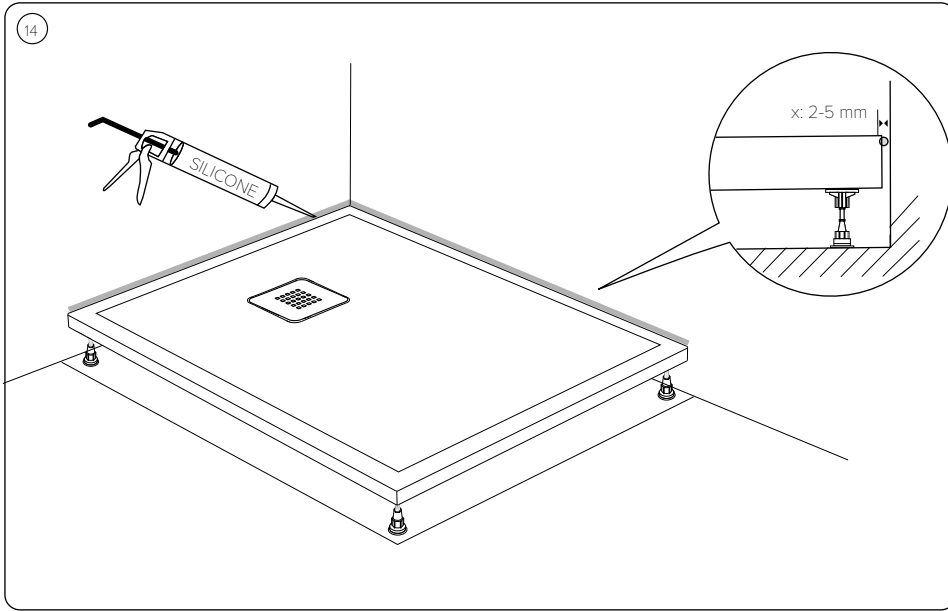
ON FEET INSTALLATION



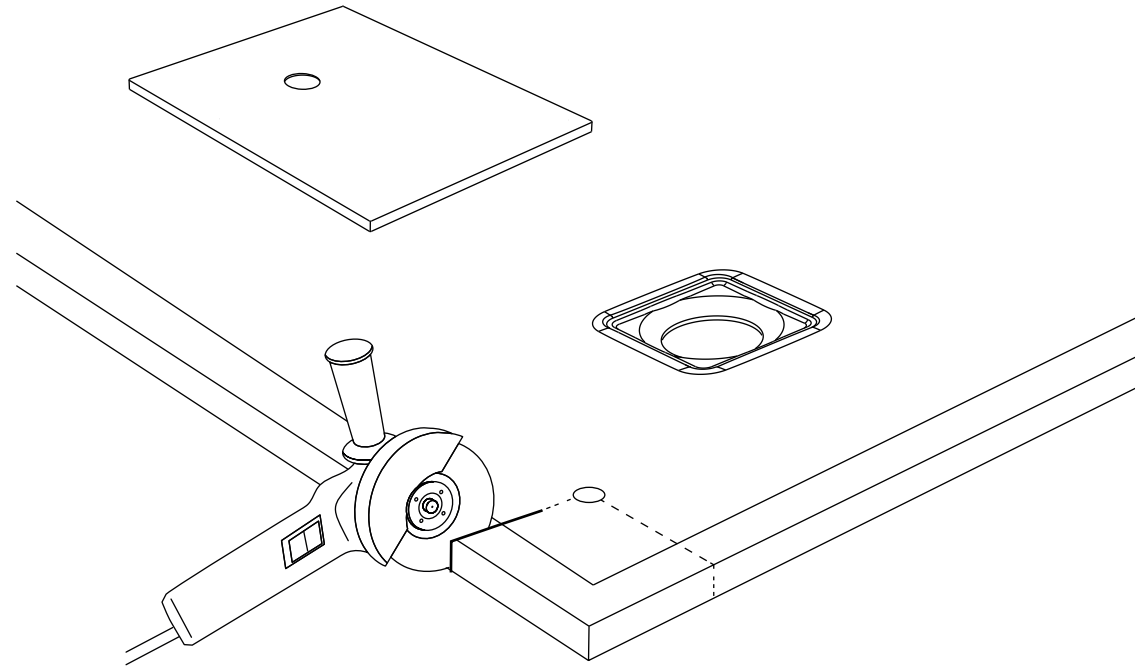
ON FEET INSTALLATION



ON FEET INSTALLATION

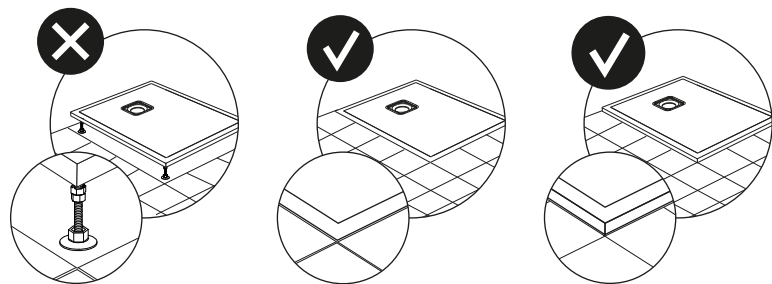


CUTTING GUIDE



CUTTING GUIDE

Please note: cut trays cannot be installed using feet

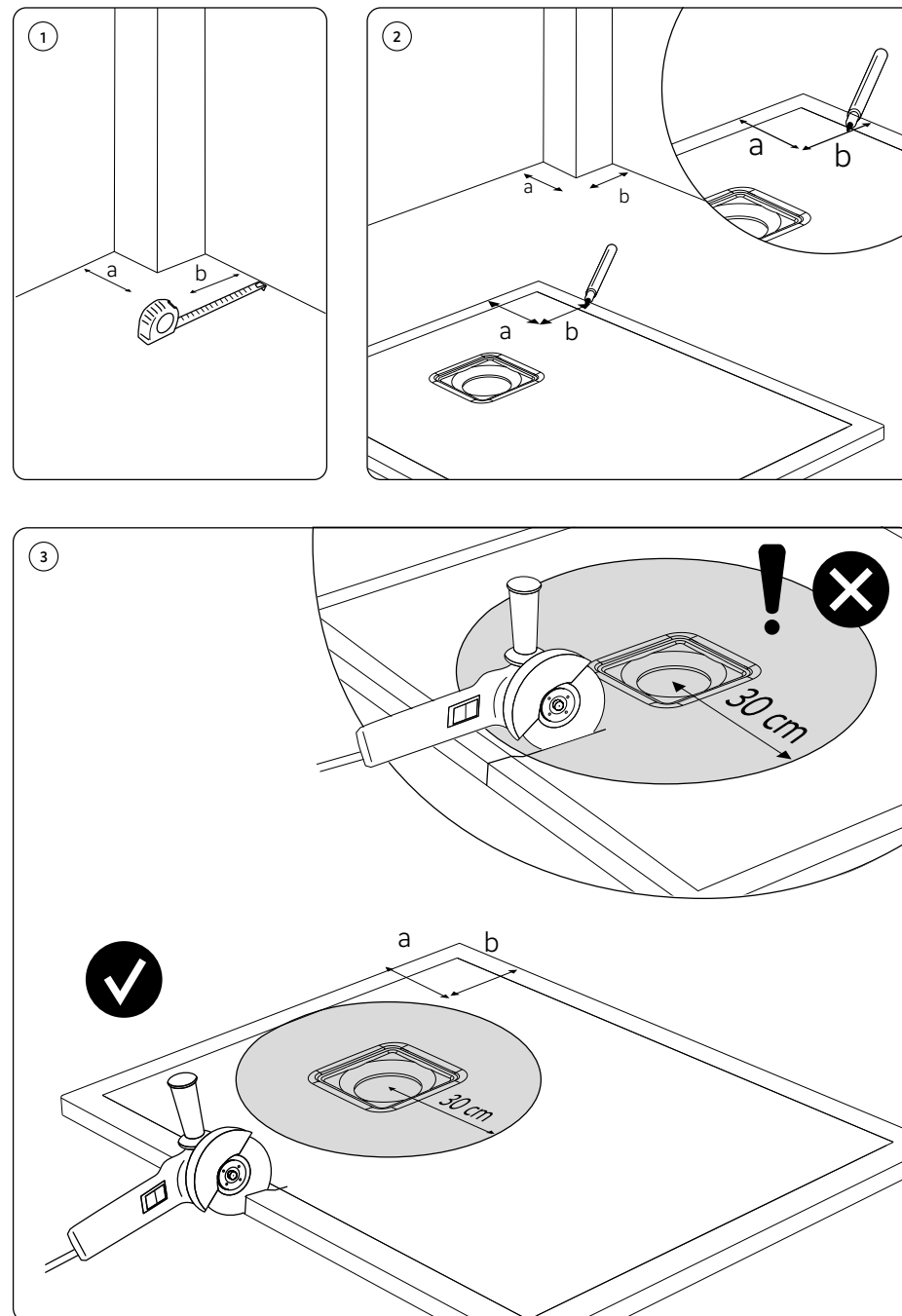


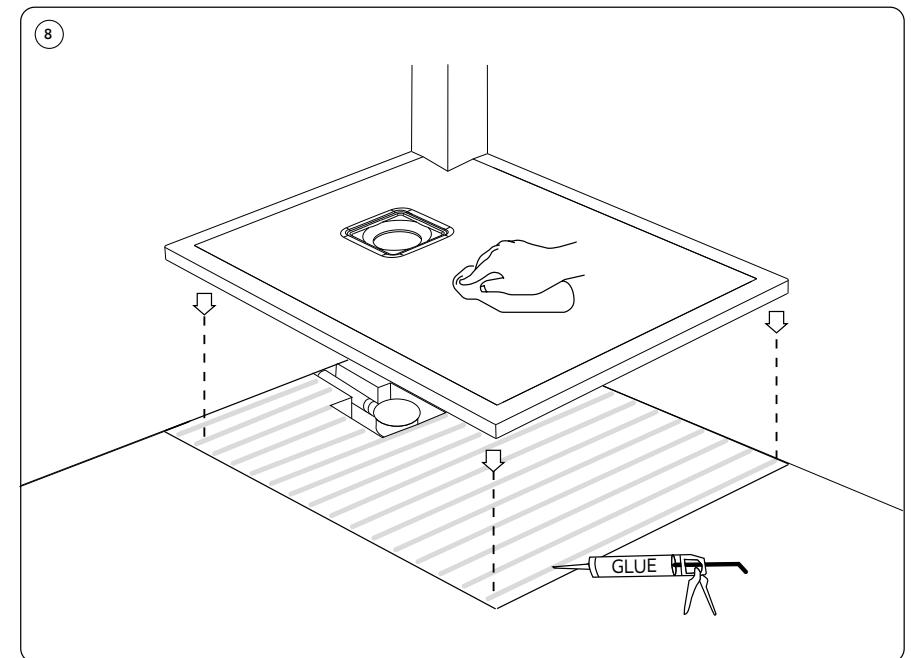
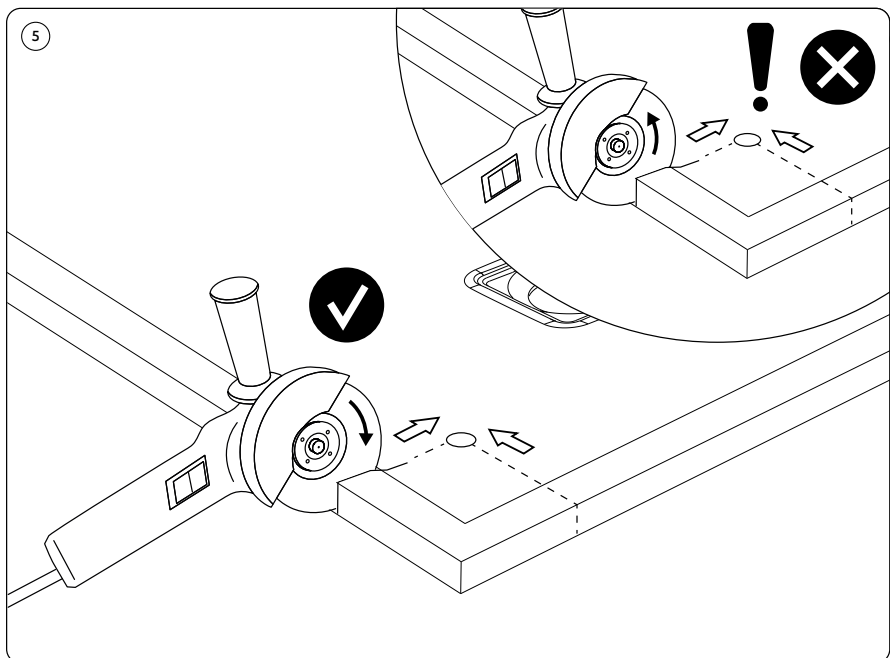
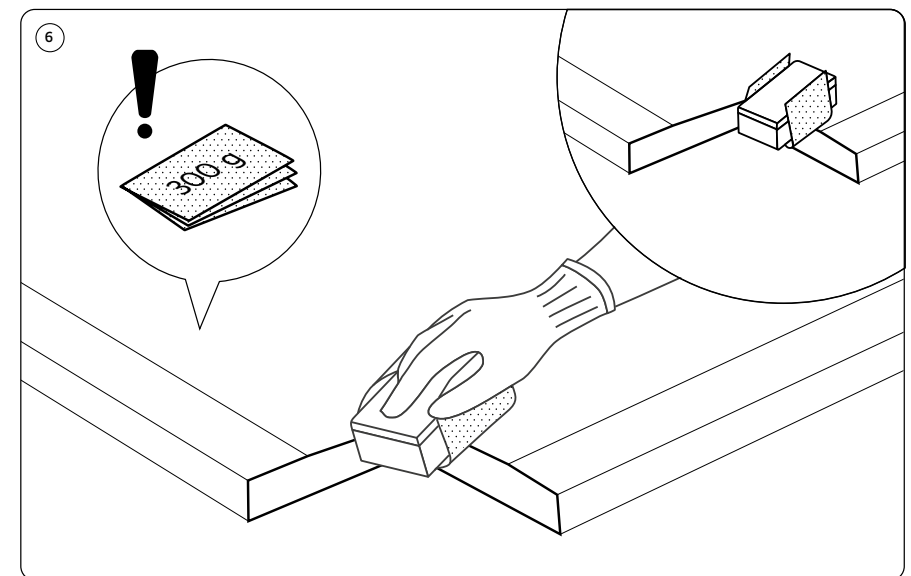
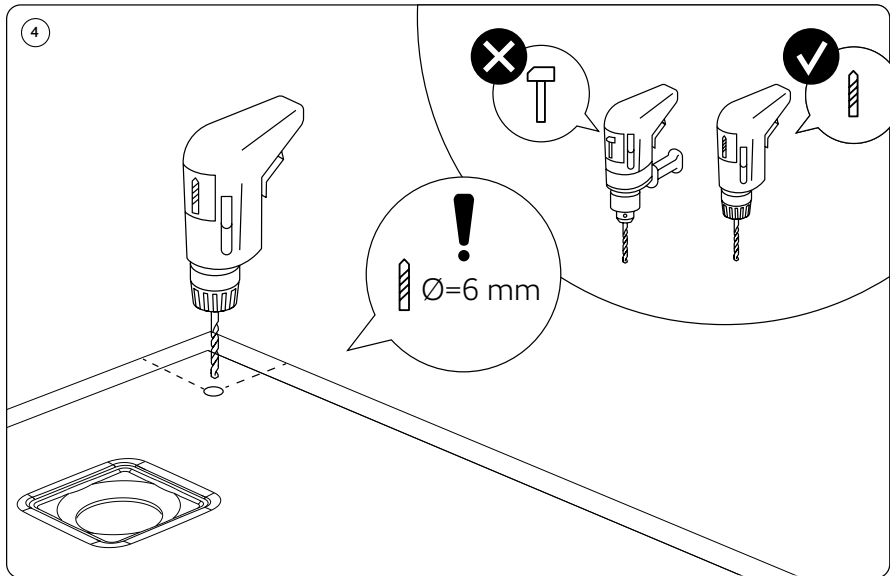
What you will need:



1. Wear gloves and protective glasses while cutting a shower tray.
2. Cut the shower tray using diamond blades intended for cutting concrete.
3. Do not use a drill in impact mode to drill holes in the shower tray.
4. After cutting, the shower tray must be installed on the floor using assembly adhesive only. Spread the adhesive over the entire surface of the product in accordance with the installation manual. Do not install the cut shower tray on legs.
5. If mounting nuts are bonded into the shower tray, the cutting line must bypass such nuts. Do not cut the shower tray within 1.5 cm of such nuts.
6. The manufacturer does not bear any liability for damage caused as a result of cutting the product.

CUTTING GUIDE





About the mineral composite

The material fully utilises the properties of dolomite stone, while being reinforced with a flexible resin binder to ensure resistance under load, damage from impact and the effects of high and low temperatures.

Cleaning

- ### Scratched or damaged surfaces

- 3 4**

www.coalbrookuk.co.uk | info@coalbrookuk.co.uk 35



COALBROOK

Whilst every effort is made to ensure the accuracy of these, they are subject to change without notice as part of the company's product development process.

The use of trademarks, product design and artwork is subject to licence or agreement.

The design registrations, trademark registrations and copyrights are protected by law and the use or reproduction outside the terms of an agreement is prohibited.

The right to modify designs and dimensions is reserved. E & O.E.

V1.0226

COALBROOK

www.coalbrookuk.co.uk | info@coalbrookuk.co.uk