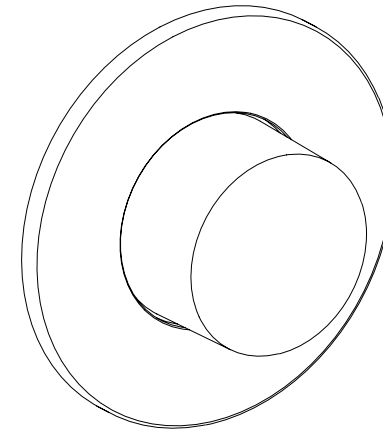




**COALBROOK**



**COALBROOK**



Whilst every effort is made to ensure the accuracy of these, they are subject to change without notice as part of the company's product development process. The use of trademarks, product design and artwork is subject to licence or agreement. The design registrations, trademark registrations and copyrights are protected by law and the use or reproduction outside the terms of an agreement is prohibited.

The right to modify designs and dimensions is reserved. E & O.E.

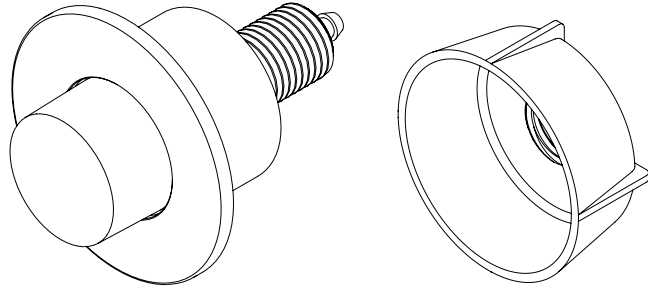
**COALBROOK**

[www.coalbrookuk.co.uk](http://www.coalbrookuk.co.uk) | [info@coalbrookuk.co.uk](mailto:info@coalbrookuk.co.uk)

**PNEUMATIC FLUSH BUTTON**

CO7050

## PACK CONTENTS

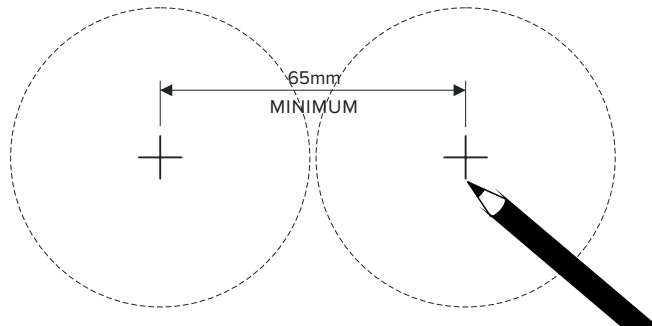


Button Assembly

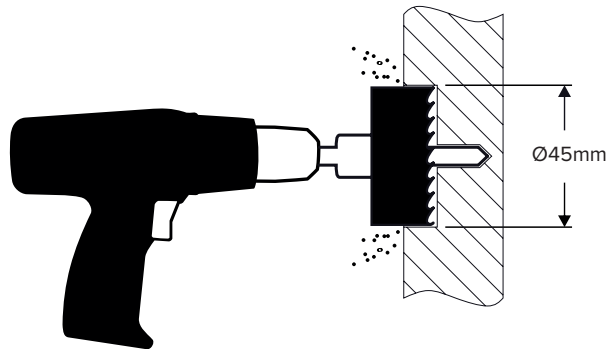
Nut

## STEP 1 - MARK HOLE (S)

See minimum hole centres for dual flush applications.



## STEP 2 - DRILL HOLE (S)

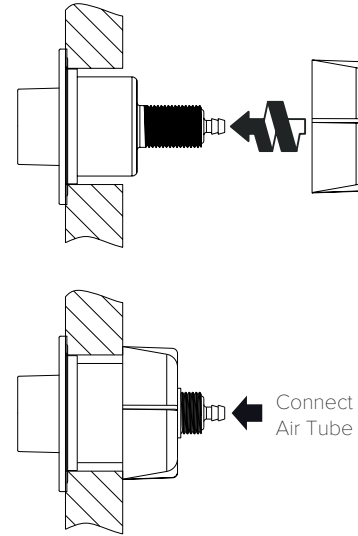


**COALBROOK**

[www.coalbrookuk.co.uk](http://www.coalbrookuk.co.uk) | [info@coalbrookuk.co.uk](mailto:info@coalbrookuk.co.uk)

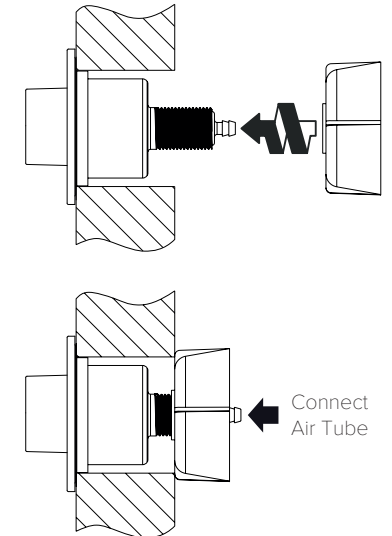
## STEP 3A - INSTALL BUTTON (10 - 29mm)

10 - 29mm Furniture Thickness



## STEP 3B - INSTALL BUTTON (29 - 48mm)

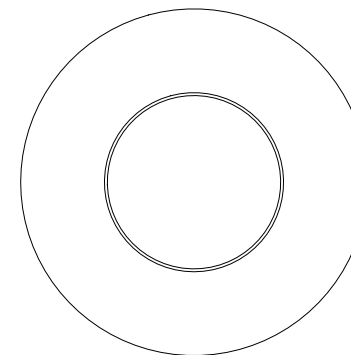
29 - 48mm Furniture Thickness



**Note :** Cut air tubes to a minimum working length and avoid kinks.

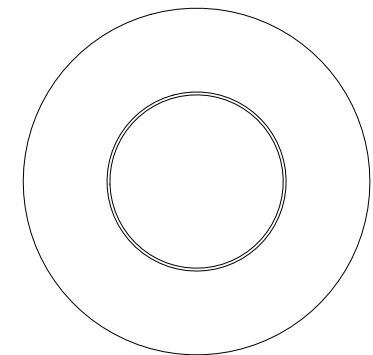
## DUAL FLUSH APPLICATIONS

For dual flush applications the air tubes must be fitted in the following orientation.



**FULL FLUSH**

Attach Clear Air Tube



**PARTIAL FLUSH**

Attach Green Air Tube

**COALBROOK**

[www.coalbrookuk.co.uk](http://www.coalbrookuk.co.uk) | [info@coalbrookuk.co.uk](mailto:info@coalbrookuk.co.uk)