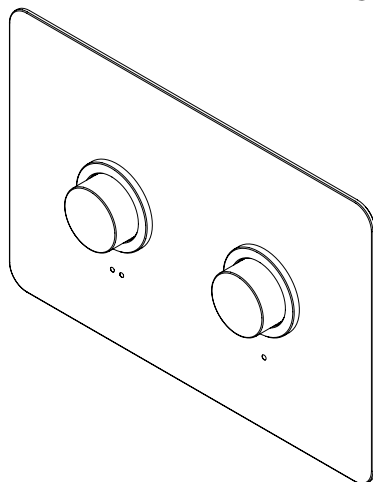
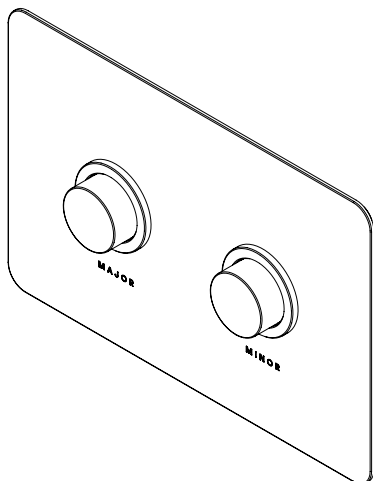




COALBROOK

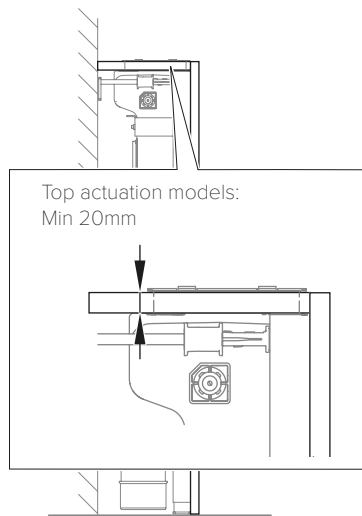
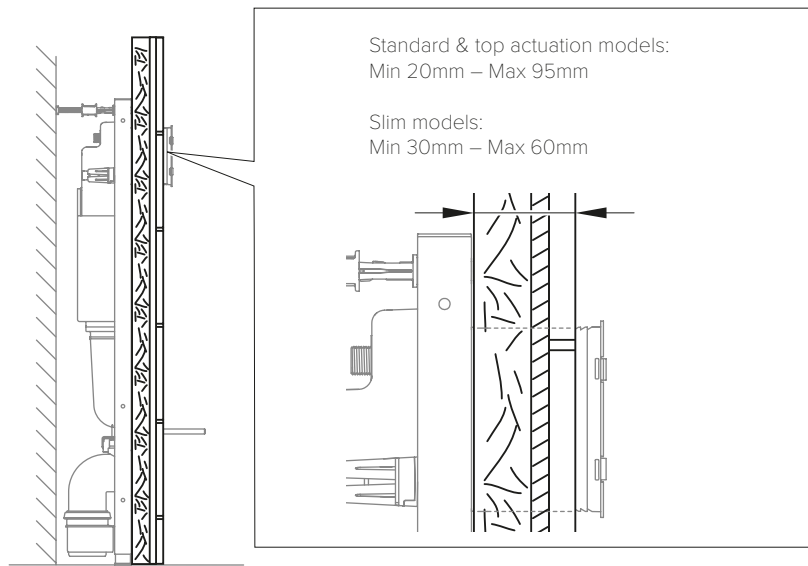
**COMPATIBLE
WITH
ALCA DRAIN
PRE-WALL
INSTALLATION
SYSTEMS**



FLUSH PLATE INSTALLATION

CO7020 | CO7021

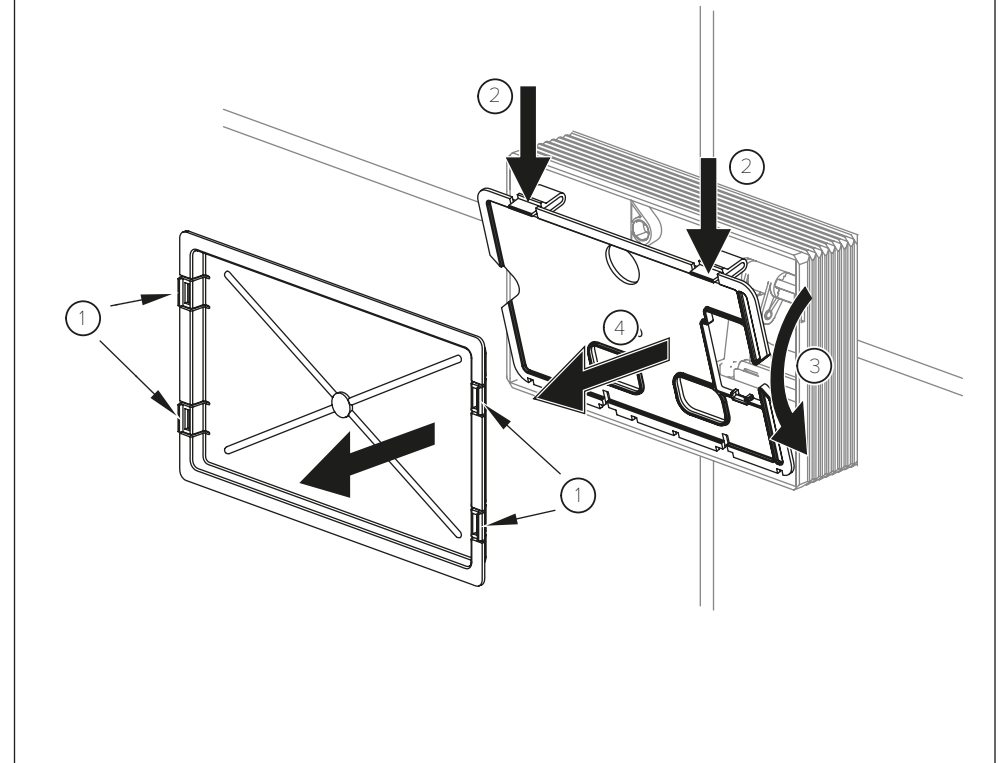
WALL THICKNESS DIAGRAM



COALBROOK

www.coalbrookuk.co.uk | info@coalbrookuk.co.uk

REMOVAL OF DUST COVERS



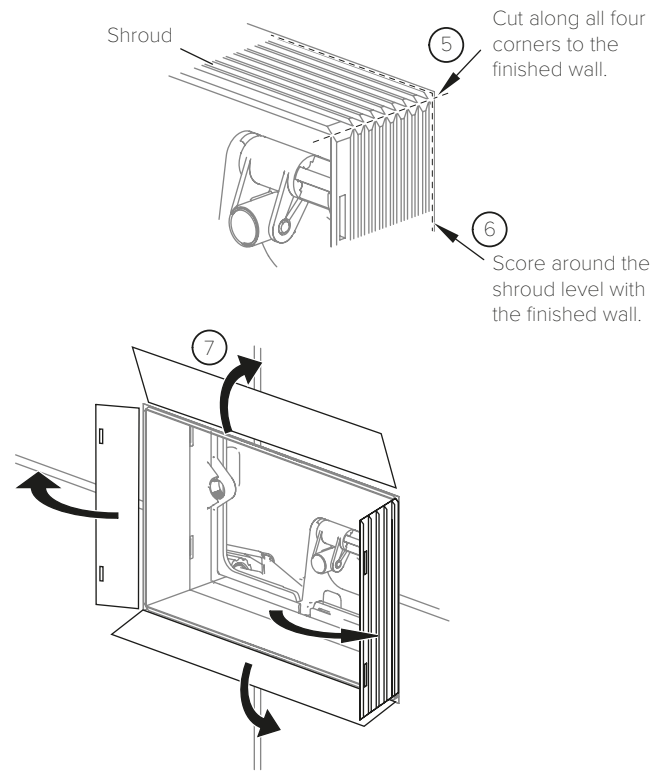
Important Note:
Do not remove dust covers until the finished wall surface is complete.

- Remove the outer dust cover by operating the four side catches (1) and gently pulling forward.
- Remove the inner dust cover by operating the two upper catches (2), rotating the plate forward (3) and gently lifting clear (4).

COALBROOK

www.coalbrookuk.co.uk | info@coalbrookuk.co.uk

EXCESS SHROUD REMOVAL EXAMPLE

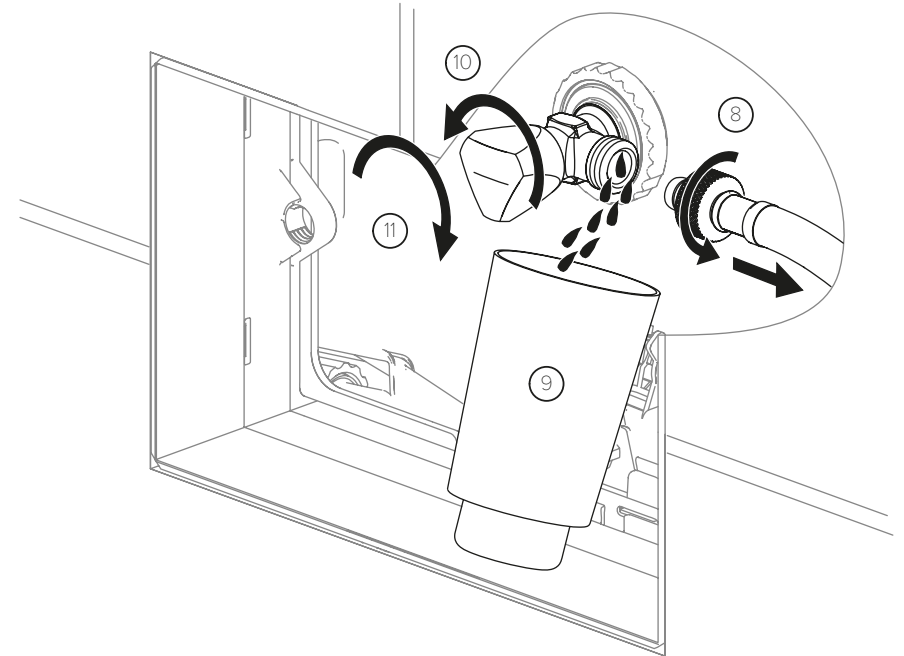


- Carefully cut along the four corners of the shroud up to the finished wall (5).
- Score around the shroud close to the finished wall surface (6).
- Hold and fold the sides of the shroud outward until they break away (7). Any local protrusions remaining can be removed with a suitable tool.

COALBROOK

www.coalbrookuk.co.uk | info@coalbrookuk.co.uk

PURGING THE WATER SUPPLY



Important Note:

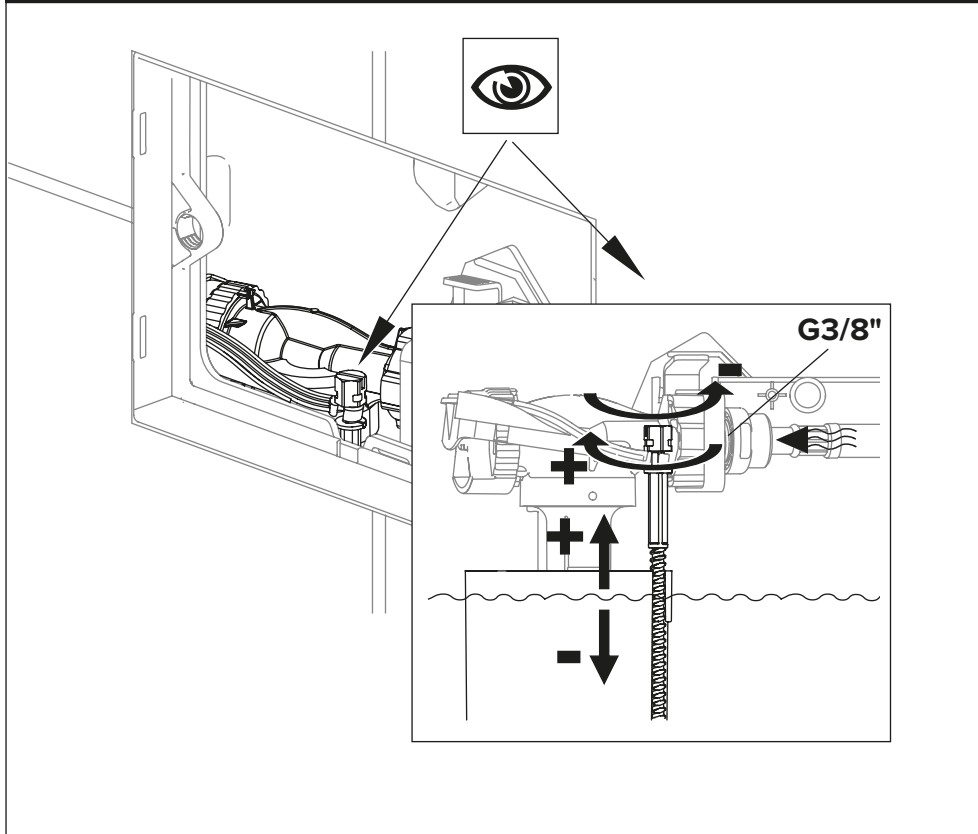
The water supply must be purged to remove unwanted debris. Failure to do so may result in some damage. The location of the stop cock will depend upon the model.

- If fitted, unscrew and remove the hose from the inlet stop cock (8).
- Place a suitable water collection vessel underneath the stop cock (9).
- Open the stop cock by rotating the handle in a counter-clockwise direction (10) and ensure that enough water is collected to purge the supply system.
- Close the stop cock by rotating the handle in a clockwise direction (11).
- Connect the hose and secure.

COALBROOK

www.coalbrookuk.co.uk | info@coalbrookuk.co.uk

ADJUSTING THE WATER LEVEL IN THE CISTERN

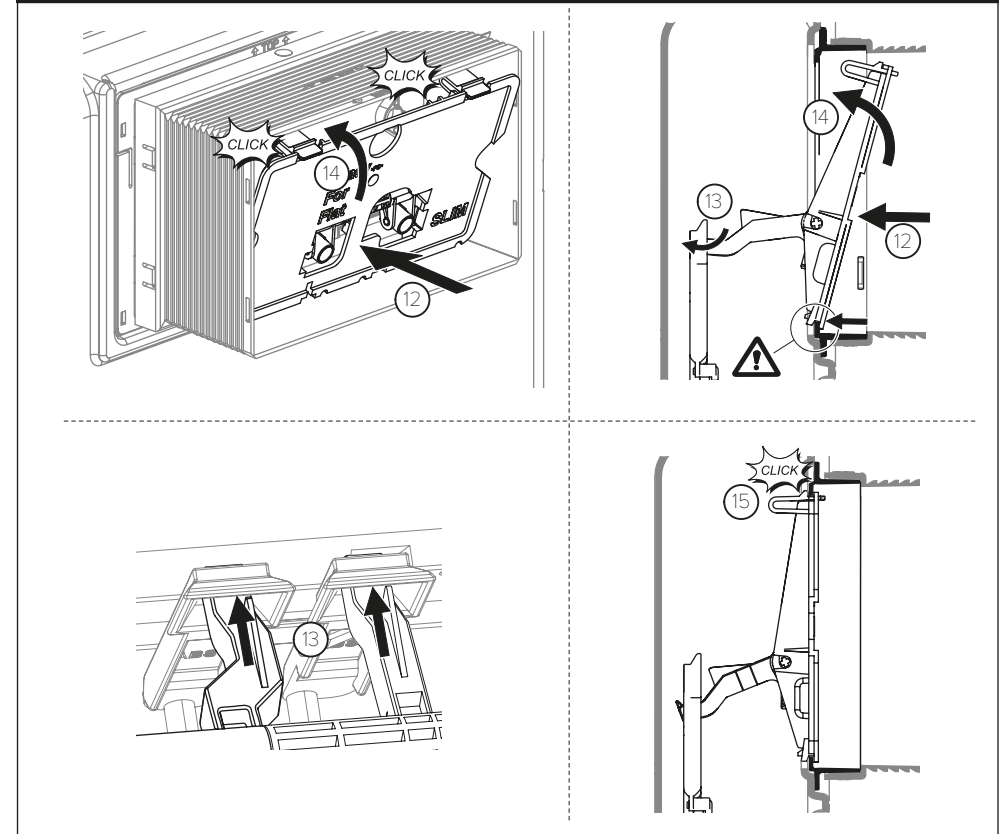


- The water level in the cistern can be adjusted.
- Locate the adjustment screw and turn clockwise to increase the water level, counter-clockwise to reduce the water level. This can be done using fingers or a flat-bladed screwdriver. The location of the adjustment screw will depend on the model.

COALBROOK

www.coalbrookuk.co.uk | info@coalbrookuk.co.uk

FITTING THE INTERNAL DUST COVER ON THE SLIM CISTERNS



SLIM Cisterns ONLY

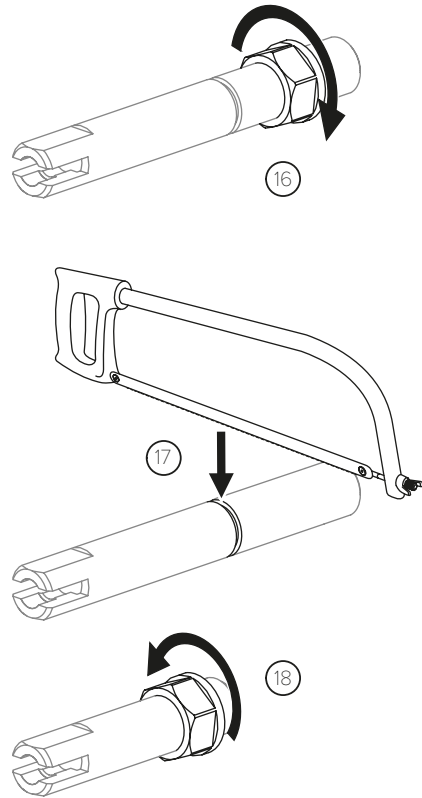
The internal dust cover can now be replaced.

- Locate the cover into the opening with the bottom in place but the upper held away by the upper catches (12).
- Protruding from the rear of the cover are two arms. Align these with the two square openings in the cistern mechanism (13), then whilst aligned, gently apply pressure to the upper catches to secure (14). A click will be heard as the catches close (15). If the arms have not located in to the two openings, gently operate them and they may locate correctly; if not, repeat the process.

COALBROOK

www.coalbrookuk.co.uk | info@coalbrookuk.co.uk

CUTTING THE FLUSH PLATE SUPPORT ARMS FOR SLIM CISTERNS

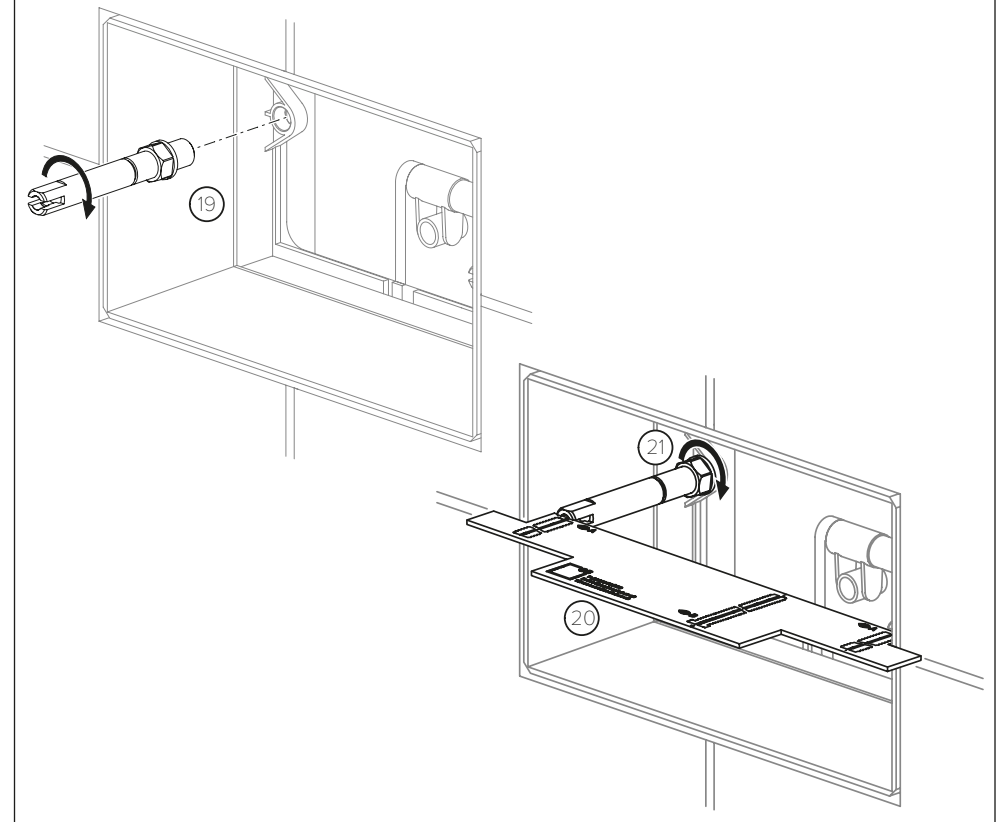


SLIM Cisterns ONLY

The flush plate support arms supplied with the flush plate need to be reduced in length when used on SLIM cisterns.

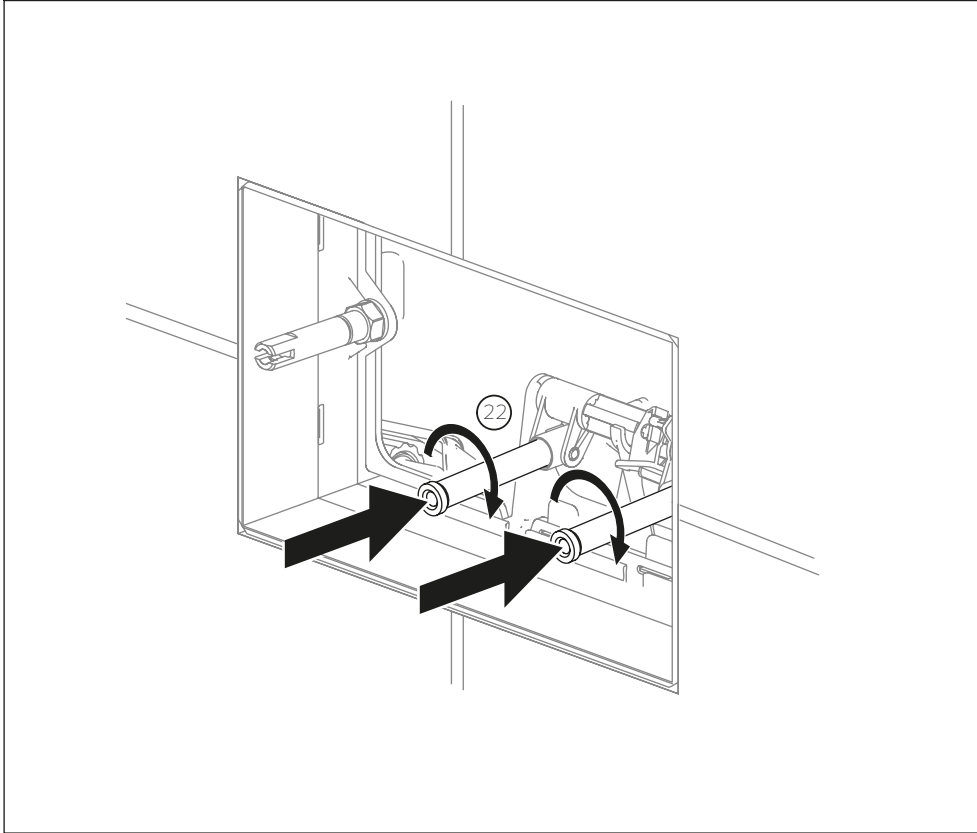
- Unscrew and remove the nuts from the flush plate support arms (16).
- Cut the flush plate support arms along the recess in the threaded section (17).
- Screw the nuts onto the flush plate support arms with the circular flat face at the base (18).

FITTING THE FLUSH PLATE SUPPORT ARMS & USING THE TEMPLATE TO SET THEM



- Locate and screw the flush plate support arms into the threaded holes at the side of the opening (19). Do not tighten the nut at this point.
- Locate the template supplied into the opening (20).
- Rotate the flush plate support arms until they are in contact with the edge of the template area marked 'A'. Do not go into the slots. Set the slots in the ends so they are horizontal.
- Insert a flat bladed screwdriver into the slot of one of the support arms. This is to prevent the support arm from rotating. Tighten the securing nut using a 15mm spanner (21). Repeat this for the remaining support arm.

FITTING THE ACTUATOR ARMS



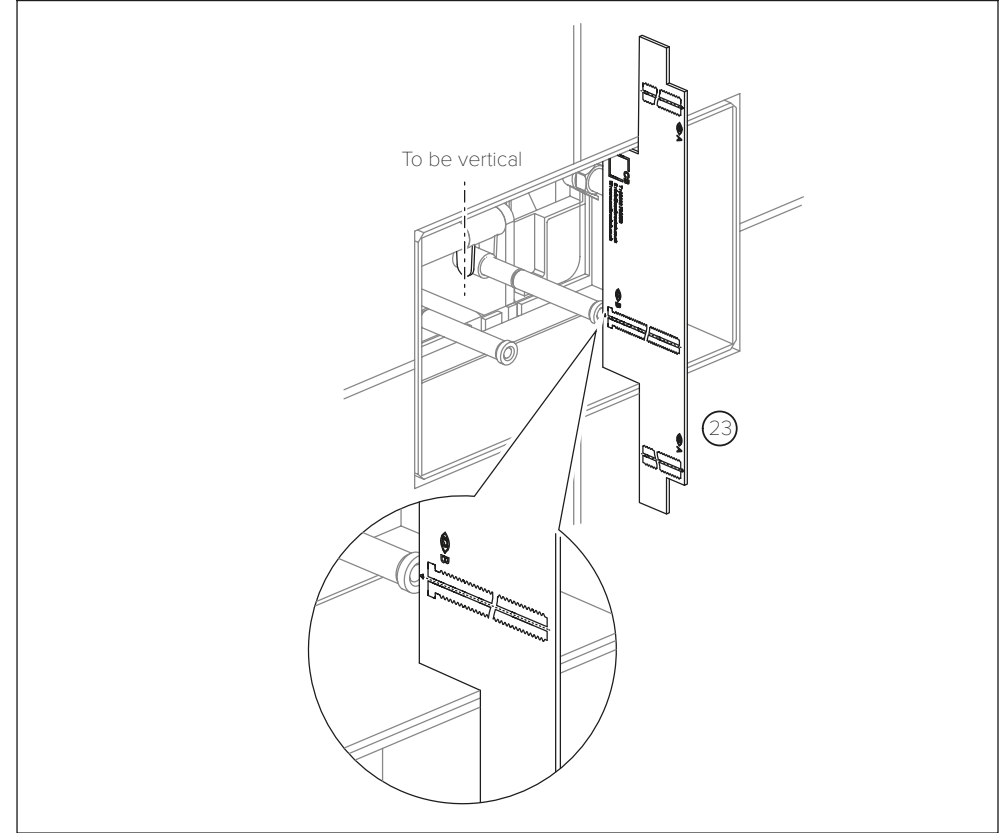
Note: For TOP ACTUATION models please see 'Fitting actuation arms to top actuation models' section.

- Locate and screw the two actuator arms in to place (22).

COALBROOK

www.coalbrookuk.co.uk | info@coalbrookuk.co.uk

USING THE TEMPLATE TO SET THE ACTUATOR ARMS



- Locate the template supplied into the opening (23).
- Align and rotate the actuator arms until they are in contact with the edge of the template area marked 'B'. Ensure that the side of the support arm is vertical when setting.

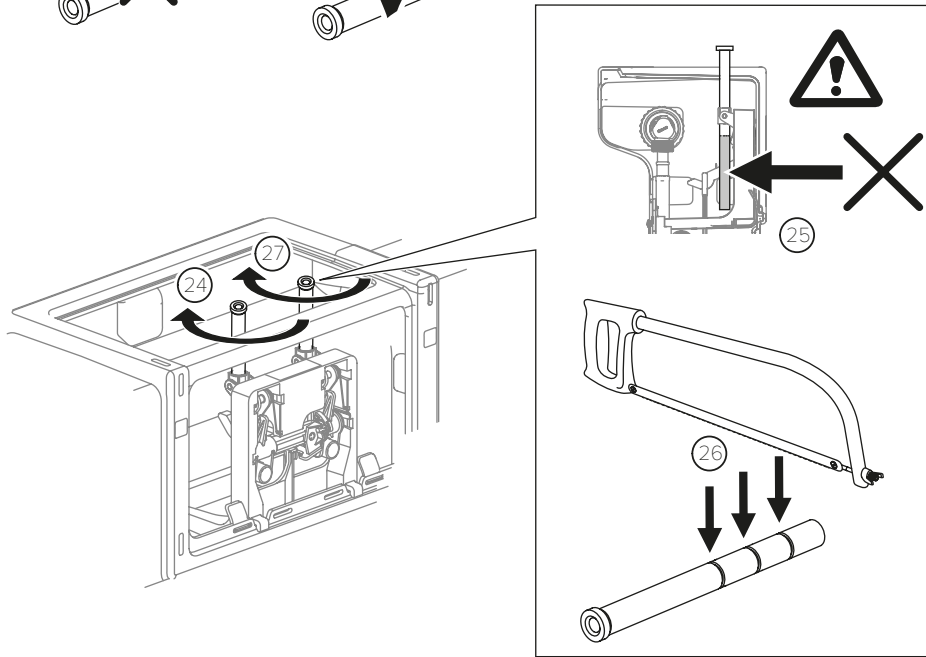
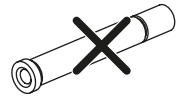
COALBROOK

www.coalbrookuk.co.uk | info@coalbrookuk.co.uk

FITTING ACTUATION ARMS TO TOP ACTUATION MODELS

Supplied as standard

Supplied separately



TOP ACTUATION Cisterns ONLY

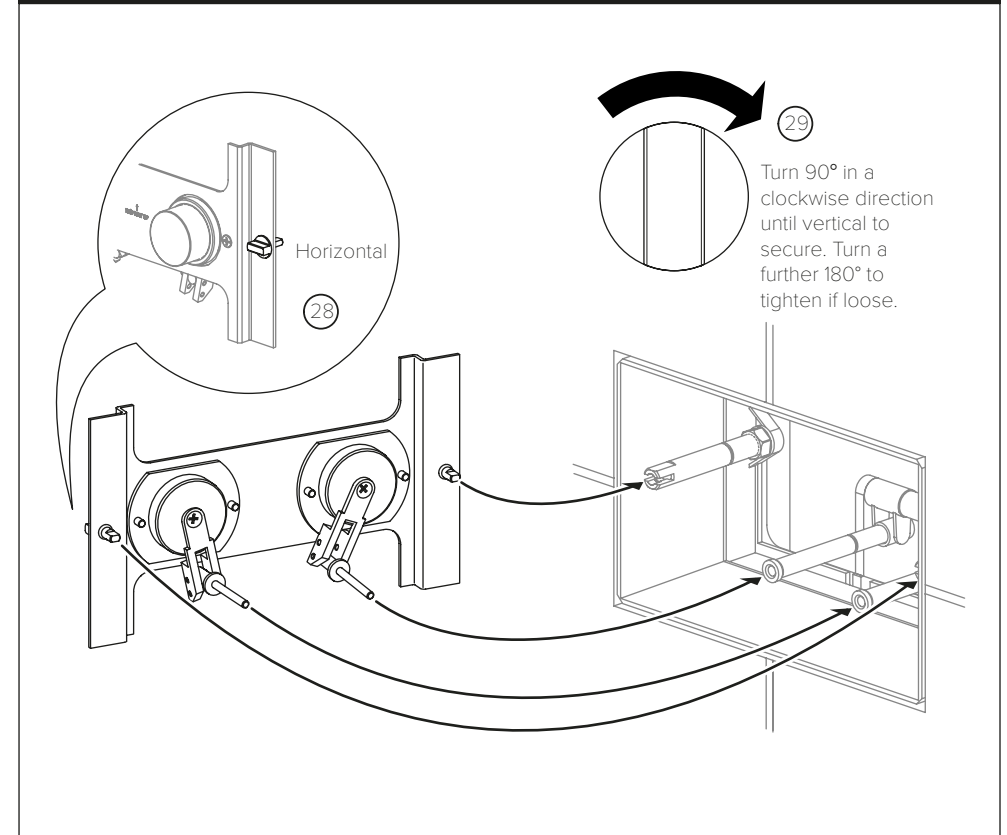
The actuation arms (supplied separately) may need to be reduced in length. Please see below:

- Locate and screw one of the actuator arms in place (24).
- Set the depth of the actuator arm using the template as shown on previous page.
- Gently push the actuator arm until the mechanism stops.
- The mechanism rotates as it is operated. If the bottom of the actuator arm is in contact with the lower part of the mechanism (25) it will require a reduction in length. Unscrew and remove the actuator arm. The actuator arm has three recesses along its threaded section (26). Cut the actuator arm at the lowest recess. Fit the actuator arm, set the depth using the template and test the operation. Repeat this process until the bottom of the actuator arm no longer restricts the movement of the mechanism. Repeat the cutting process for the remaining actuator arm, locate and screw this in place (27) and set its depth using the template.

COALBROOK

www.coalbrookuk.co.uk | info@coalbrookuk.co.uk

FITTING THE CONCEALED BUTTON ASSEMBLY



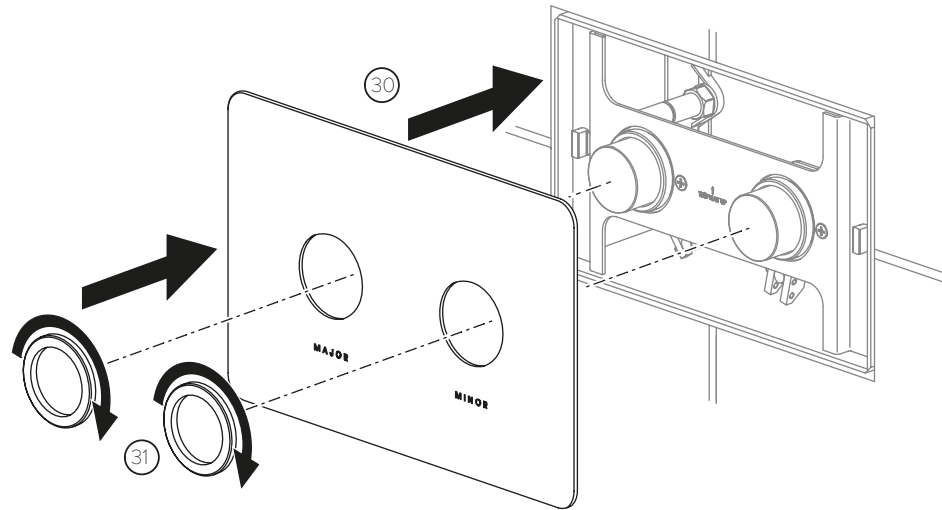
Turn 90° in a clockwise direction until vertical to secure. Turn a further 180° to tighten if loose.

- Ensure the assembly is the correct way up. An arrow on the front face indicates the correct orientation.
- Rotate the two outer catch handles to the horizontal position (28).
- Angle the plate and locate the rods at the base of the buttons into the actuator arms.
- Locate the rear of the catches into the flush plate support arms.
- With the assembly in place, turn the catches clockwise to the vertical position to secure (29).
- If the assembly is loose turn the catches 180 degrees in a clockwise direction (29).
- Check the operation of the buttons.

COALBROOK

www.coalbrookuk.co.uk | info@coalbrookuk.co.uk

FITTING THE FASCIA PLATE



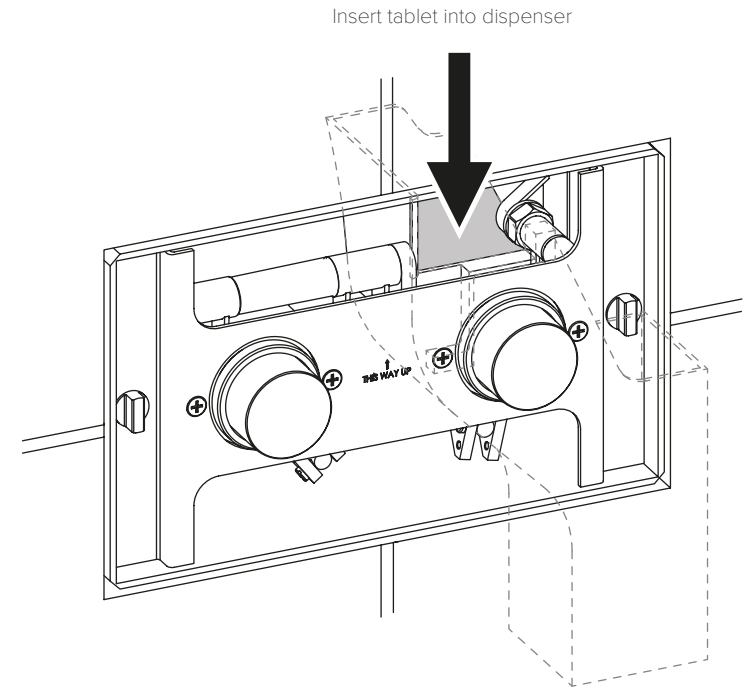
CO7020 plate shown

- Locate the fascia plate over the flush buttons (30).
- Locate and screw the button shrouds in place to secure (31).
- Check the operation of the buttons.

COALBROOK

www.coalbrookuk.co.uk | info@coalbrookuk.co.uk

WC TABLETS



- Remove the fascia plate in the reverse to that shown in the 'fitting the fascia plate' section.
- Locate the WC tablet into the opening on the right hand side as shown above.
- Fit the fascia plate as shown in the 'fitting the fascia plate' section.

COALBROOK

www.coalbrookuk.co.uk | info@coalbrookuk.co.uk



COALBROOK

Whilst every effort is made to ensure the accuracy of these, they are subject to change without notice as part of the company's product development process. The use of trademarks, product design and artwork is subject to licence or agreement. The design registrations, trademark registrations and copyrights are protected by law and the use or reproduction outside the terms of an agreement is prohibited.

The right to modify designs and dimensions is reserved. E & O.E.

v1.0922

COALBROOK

www.coalbrookuk.co.uk | info@coalbrookuk.co.uk