



COALBROOK

BA2007

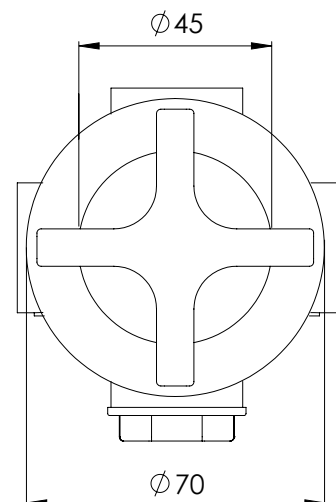
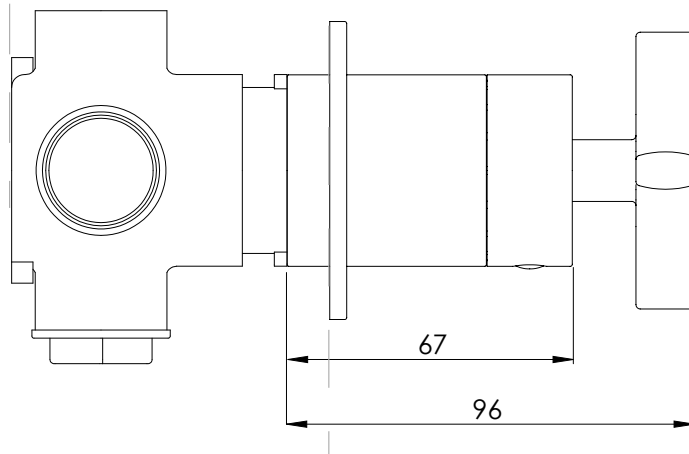
BANK WALL MOUNTED 2-WAY
DIVERTER TRIMSET

DATE: 16/11/2023

REVISION: A

MOUNTING SURFACE FINISHED WALL SURFACE

65 MIN
106 MAX



DIMENSIONS IN MILLIMETRES

WHILST EVERY EFFORT IS MADE TO ENSURE THE ACCURACY OF THESE DATA SHEETS THEY ARE SUBJECT TO CHANGE WITHOUT NOTICE AS PART OF THE COMPANY'S PRODUCT DEVELOPMENT PROCESS



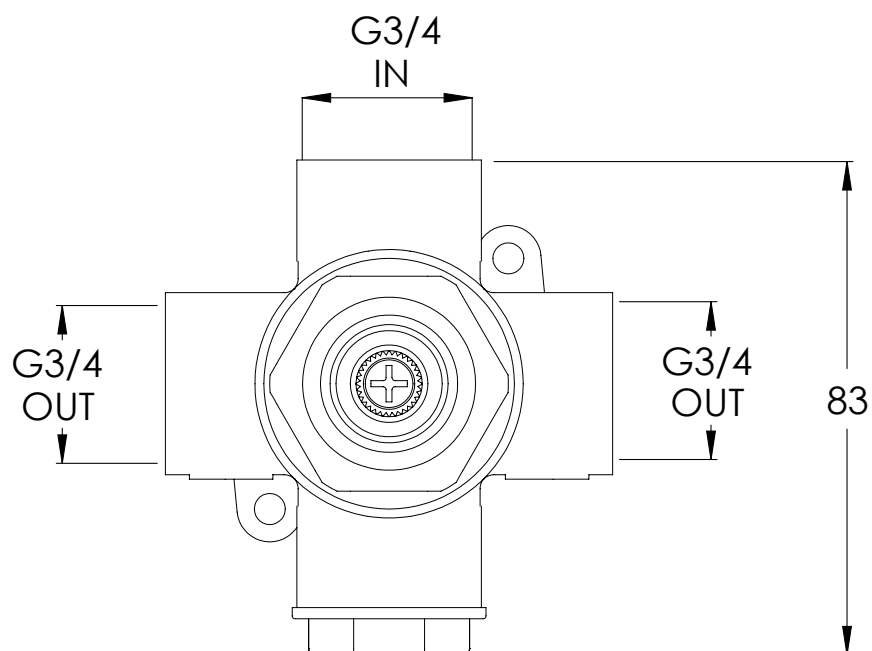
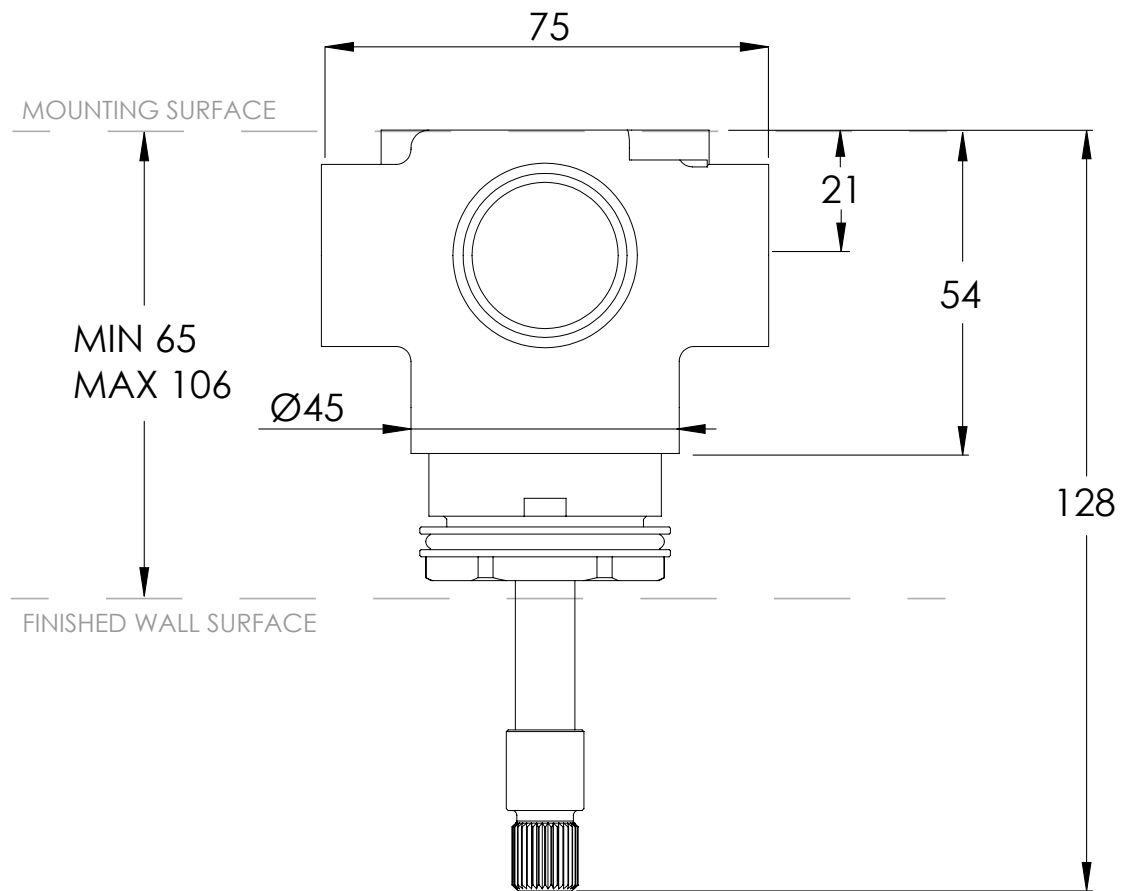
COALBROOK

CO2104

WALL MOUNTED 2-WAY DIVERTER
ROUGH

DATE: 23/05/2025

REVISION: B



DIMENSIONS IN MILLIMETRES

WHILST EVERY EFFORT IS MADE TO ENSURE THE ACCURACY OF THESE DATA SHEETS THEY ARE SUBJECT TO CHANGE WITHOUT NOTICE AS PART OF THE COMPANY'S PRODUCT DEVELOPMENT PROCESS