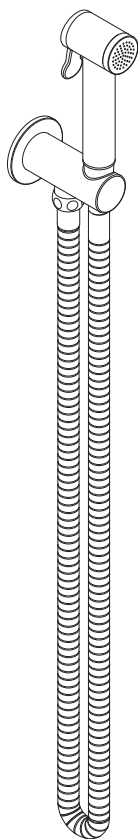




COALBROOK



**WALL MOUNTED DOUCHE HANDSPRAY &
HOLDER**

7 0 4 0

Professional installation

We recommend that our products are fitted by a fully qualified professional plumber. They should be installed correctly and in accordance with all local water regulations and the system protected by non-return valves (not supplied). All products should be accessible for routine servicing. Installation of this product should respect requirement IRN R090.

This product must not be connected to an instantaneous water heater or instantaneous electric shower.

Operating temperature and pressure

Minimum: 0.5 bar.

Maximum: 3.0 bar.

(We recommend between 1 & 2 bar).

The handspray can operate to a maximum water temperature of 60°C. However, the recommended maximum safe temperature is 38°C.

If the maximum temperature and pressure settings are exceeded damage and injury can result.

Supply temperature safety notice

A thermostatic mixing valve (TMV) should be fitted (not supplied) to the hot supply to restrict the temperature to a safe working/maximum temperature to comply with local building regulations, current legislation, relevant standards and codes of practice. Maximum allowed temperatures vary subject to type of installation or specification of building.

Flushing system

It is most important to flush out all pipework thoroughly before connecting the holder. Failure to do so is the single most common cause of water restriction and valve failure.

Water quality

In hard water areas, a suitable water treatment system should be provided to prevent limescale deposits (calcium deposits) which may effect the long term performance of the product. Exterior surfaces should be gently wiped with a dry soft cloth after use to minimise water stains and limescale deposits.

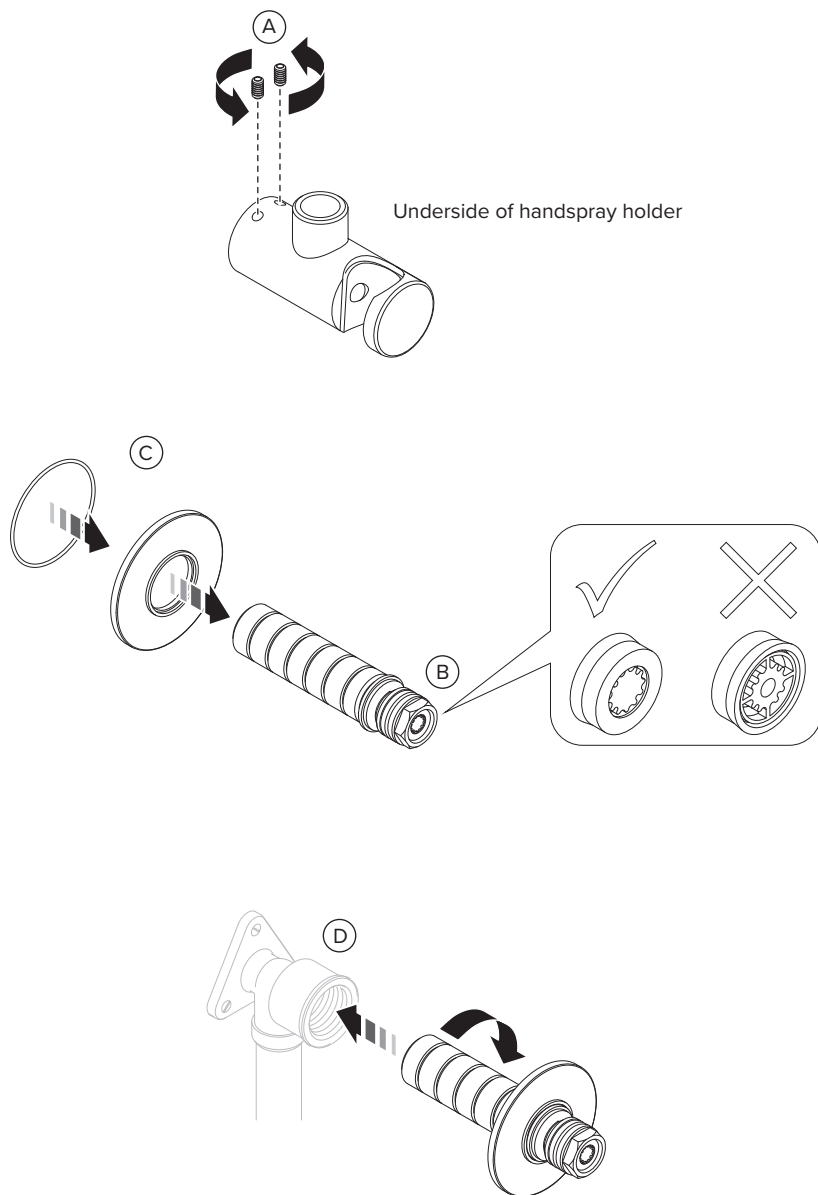
It is important that the outlets/holes in the handspray are kept free of limescale. If limescale is allowed to form, it will reduce water flow and can result in damage. We recommend regular cleaning to prevent the formation of limescale.

A particle filter can be installed to the conical end of the flexible hose to reduce/prevent water impurities that may cause premature failure of the valve within the handspray.

Check valve

To aid in the protection of your water system a check valve is fitted in the handspray. This should not be viewed as a replacement for any external backflow prevention requirements.

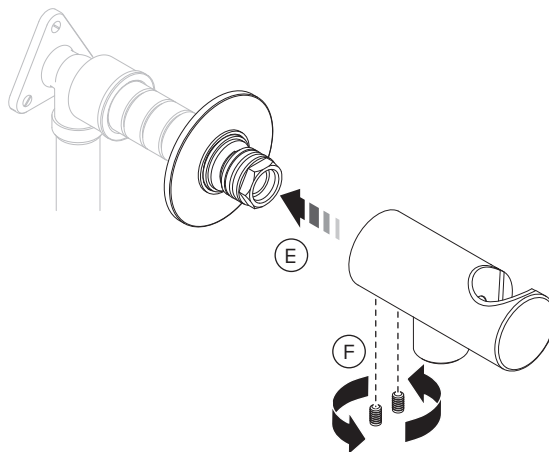
HANDSPRAY HOLDER INSTALLATION DIAGRAM



COALBROOK

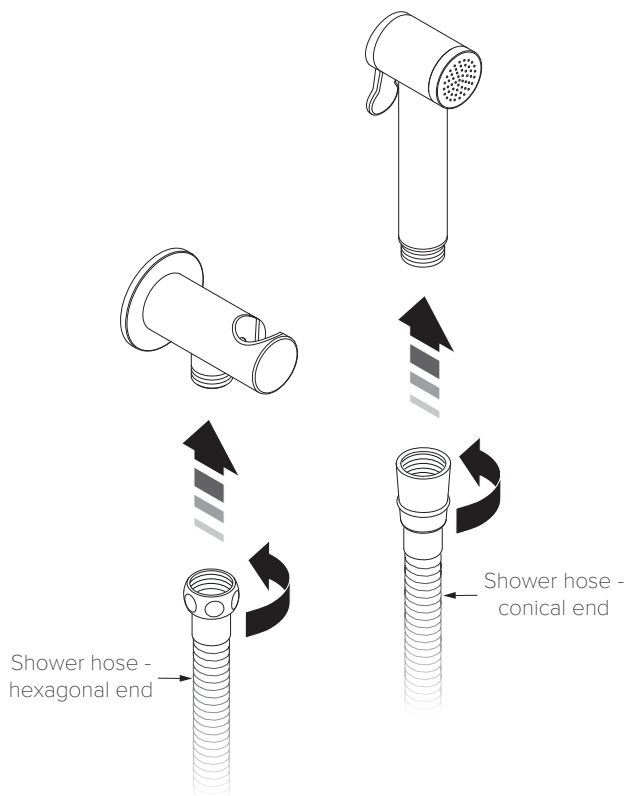
www.coalbrookuk.co.uk | info@coalbrookuk.co.uk

HANDSPRAY HOLDER INSTALLATION DIAGRAM (STEPS 1 - 6)



1. After removing the holder from its packaging, unscrew and remove the two grub screws (A) from the underside using a suitable hexagonal key.
2. The threaded tail has recesses along its length to aid cutting. Cut the threaded tail to the required length.
3. There is a flow restrictor in the hexagonal end of the threaded tail. Ensure the flow restrictor orientation is as shown (B). If not as shown, correct before continuing installation.
4. Ensure that the O ring is located into the recess in the rear of the wall plate. Slide the wall plate onto the threaded tail (C).
5. Apply suitable sealing compound/tape to the threaded tail. Screw the threaded tail into a suitable G $\frac{1}{2}$ female connector or tee connector (D). To aid in this, the end of the threaded tail has a hexagonal end. Be careful not to over tighten the threaded tail. Additional sealant can be applied to the rear of the wall plate if required.
6. Locate the holder onto the threaded tail (E). Ensure that it is aligned correctly, then secure in place using the two grub screws previously removed (F) and a suitable hexagonal key.

MAKING HOSE CONNECTIONS (STEPS 1 - 4)

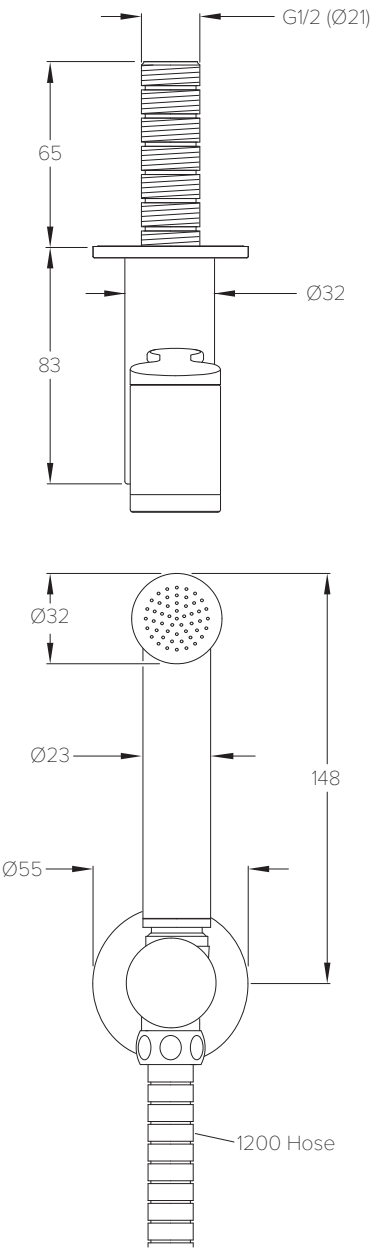


1. Use the provided hose to connect the handspray to the holder. The conical end of the hose should be screwed onto the threaded end of the handspray. Screw the hexagonal end of the hose onto the outlet port on the holder.
2. Check the operation of the handspray.
3. Locate the handspray into the holder. Turn on the water supply and check concealed joints for leaks.
4. Lift the handspray from the holder and check the hose connections for leaks..

COALBROOK

www.coalbrookuk.co.uk | info@coalbrookuk.co.uk

SPECIFICATION DIAGRAM (mm)

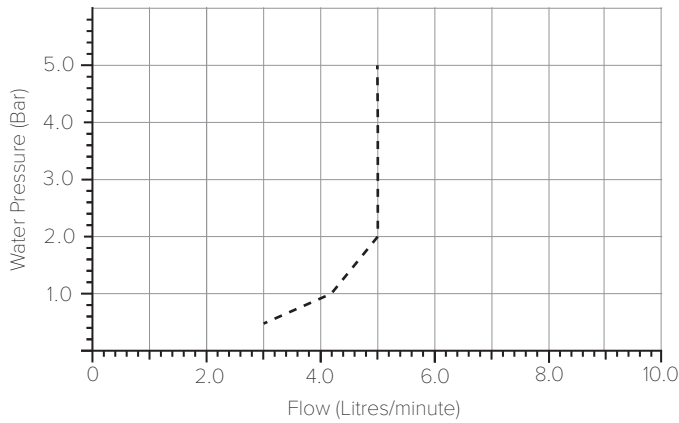


COALBROOK

TYPICAL FLOW RATE

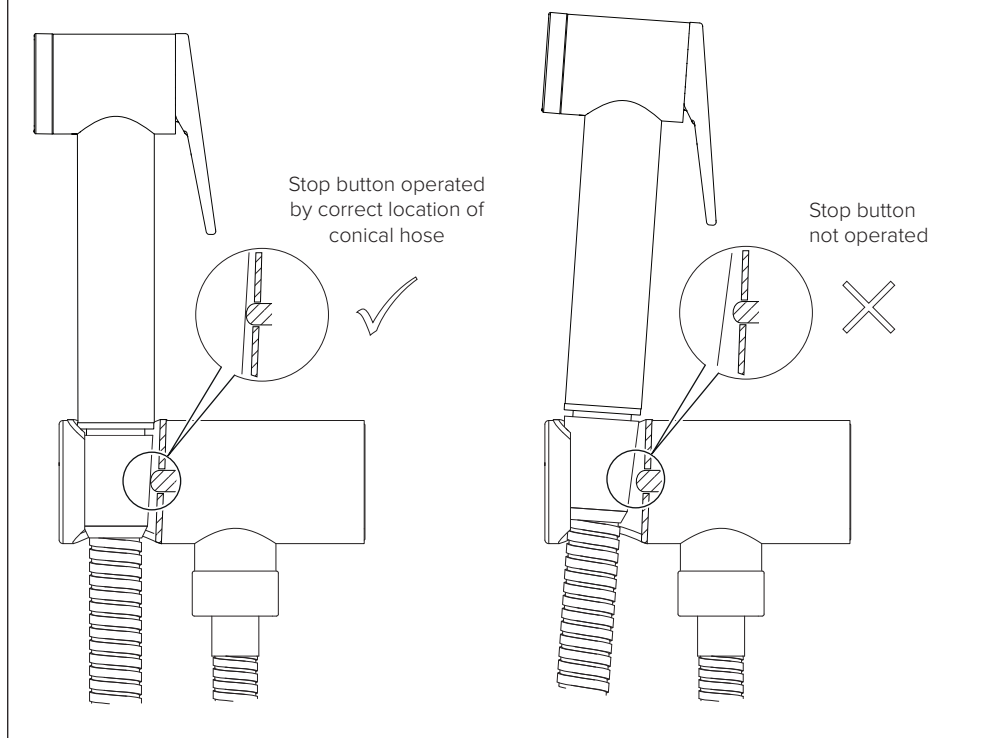
Flow rates shown are free-flowing and may vary subject to restrictions created by installation, pipework layout or application.

Note: The wall mounted holster is fitted with a flow regulator. This regulates the water flow rate to a maximum 5 litres per minute.



Water Pressure (Bar)	Outlet (Litres/minute)
0.5	3.0
1.0	4.2
2.0	5.0
3.0	5.0
4.0	5.0
5.0	5.0

CORRECT USE OF HANDSPRAY



- Remove the handspray from the holder.
- Lightly press the lever on the rear of the handspray to start water flow.
- Release the lever on the rear of the handspray to stop water flow.
- Always return the handspray to the holder after use. Ensure that the handspray is located correctly and operates the stop button within the holder as shown above.

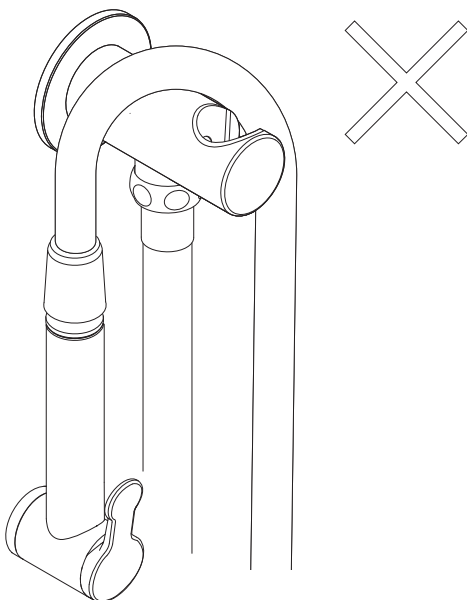
The stop button operates a valve that prevents water flow to the hose and handspray.

COALBROOK

www.coalbrookuk.co.uk | info@coalbrookuk.co.uk

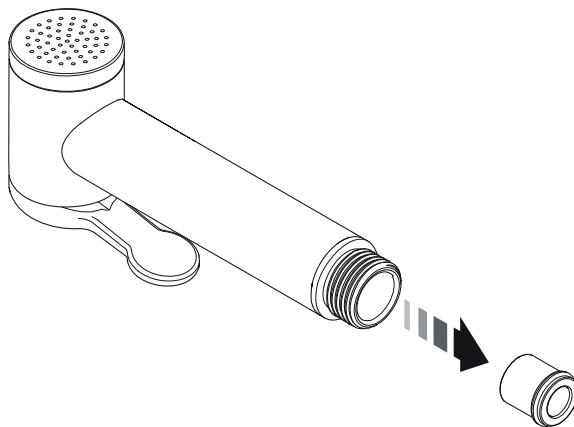
INCORRECT USE OF HANDSPRAY

NEVER allow the handspray and hose to hang freely, or hang the hose over the holder.
This will potentially cause damage to the hose, resulting in failure & leaks.
Always replace the handspray correctly.



COALBROOK

www.coalbrookuk.co.uk | info@coalbrookuk.co.uk



If after a period of time you experience reduced water flow, this can be an indication that the check valve has become blocked with debris. The check valve can be removed for replacement or cleaning.

To do this:

- Isolate the water supply to the holder.
- Remove the handspray from the holder.
- Press the trigger to reduce water pressure within the flexible hose.
- Unscrew and remove the conical end of the flexible hose from the handspray.
- Place a suitable tool into the end of the check valve and pull the check valve out of the handspray body.
- Replace with a new check valve / replace the check valve after cleaning.
- Assemble in reverse order.



COALBROOK

Whilst every effort is made to ensure the accuracy of these, they are subject to change without notice as part of the company's product development process. The use of trademarks, product design and artwork is subject to licence or agreement. The design registrations, trademark registrations and copyrights are protected by law and the use or reproduction outside the terms of an agreement is prohibited.

The right to modify designs and dimensions is reserved. E & O.E.

V1.0125

COALBROOK

www.coalbrookuk.co.uk | info@coalbrookuk.co.uk