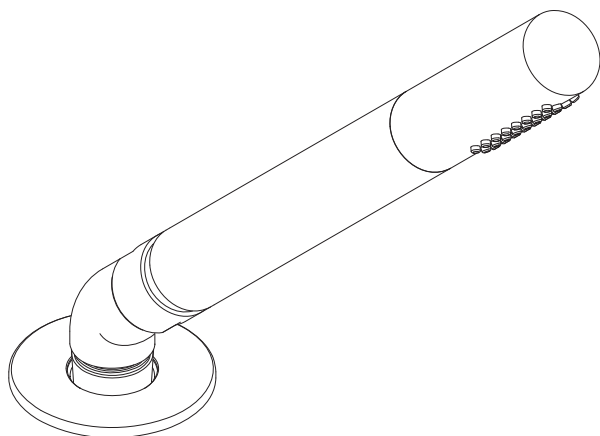




COALBROOK



**PULL OUT HANDSPRAY, HOSE &
HOLSTER INSTALLATION**

Professional installation

We recommend that Coalbrook products are fitted by a fully qualified professional plumber. They should be installed correctly and in accordance with all local water regulations. Where required the system should be protected by non-return valves (not supplied). All products should be accessible for routine servicing.

Check valve

To aid in the protection of your water system a check valve is fitted in the handspray. This should not be viewed as a replacement for any external backflow prevention requirements.

Suits all systems

This Coalbrook product is potentially suitable for every possible application, type of boiler and water supply pressure. However, if your supply pressure is below 1 bar it is advisable to fit a water pump. For systems with combination boilers, it is not advisable to fit pumps (refer to boiler manufacturer).

Supply temperature safety notice

A thermostatic mixing valve (TMV) should be fitted (not supplied) to the hot supply to restrict the temperature to a safe working/maximum temperature to comply with local building regulations, current legislation, relevant standards and codes of practice. Maximum allowed temperatures vary subject to type of installation or specification of building.

The handspray can operate to a maximum water temperature of 60°C. However, the recommended maximum safe water temperature is 38°C.

Flushing system

It is most important to flush out all pipework thoroughly before connecting the product. Failure to do so is the single most common cause of water restriction.

Balancing flow

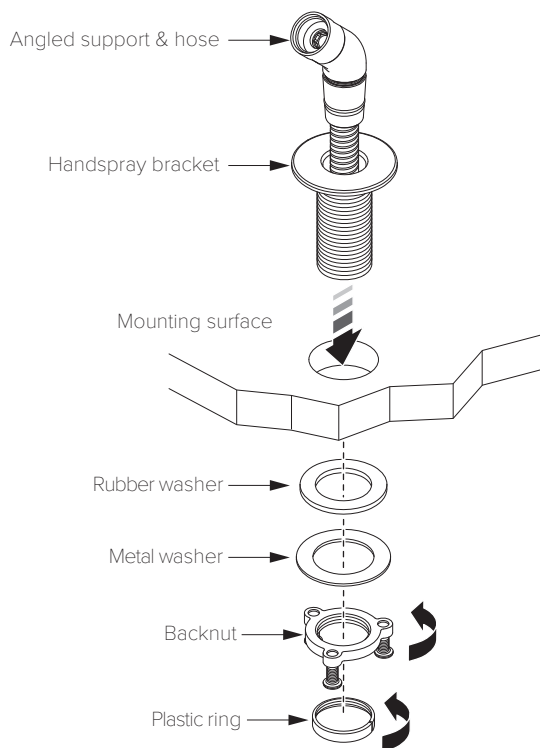
If a significant pressure difference exists between the hot and cold supplies, we advise fitting a 'flow regulator' (not supplied) to the higher or both supplies.

Water quality

In hard water areas, a suitable water treatment system should be provided to prevent limescale deposits (calcium deposits) which may effect the long term performance of the cartridges. Exterior surfaces should be gently wiped with a dry soft cloth after use to minimise water stains and limescale deposits.

It is important that the outlets/holes in the handspray are kept free of limescale. If limescale is allowed to form, it will reduce water flow and can result in damage. We recommend regular cleaning to prevent the formation of limescale.

HANDSPRAY INSTALLATION (STEPS 1 - 6)

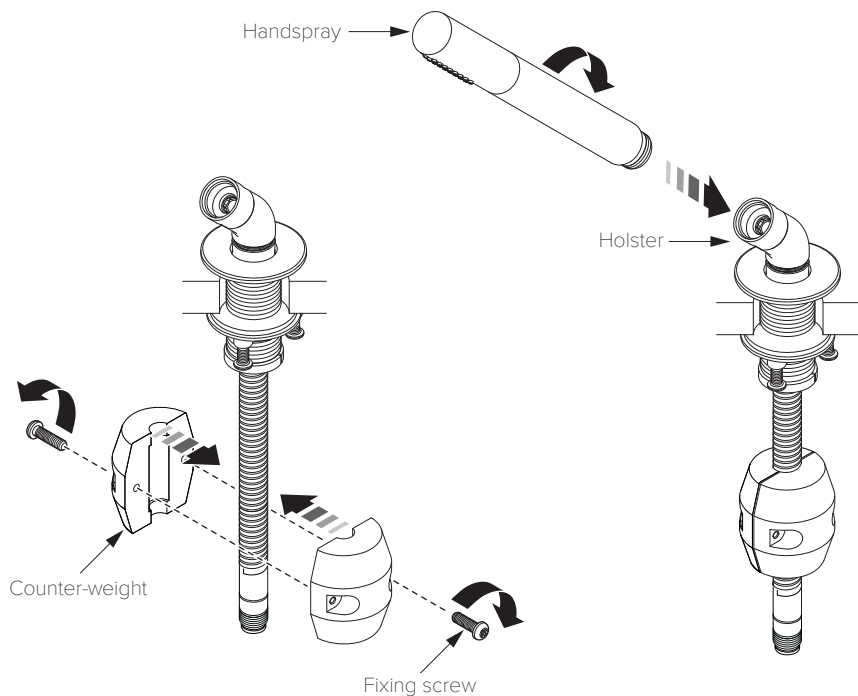


1. When necessary, drill a suitable hole in the mounting surface to suit the Ø29mm threaded tail of the handspray bracket.
2. Unscrew the plastic ring from the bottom of the threaded tail of the handspray bracket.
3. Pass the threaded tail of the handspray bracket and the hose through the hole in the mounting surface.
4. Locate both washers onto the threaded tail. Ensure that the rubber washer is assembled first so that it comes into direct contact with the mounting surface.
5. Screw the backnut onto the threaded tail, and tighten the handspray bracket to the mounting surface using the three attached screws. Do not over tighten.
6. Screw the plastic ring onto the bottom of the threaded tail.

COALBROOK

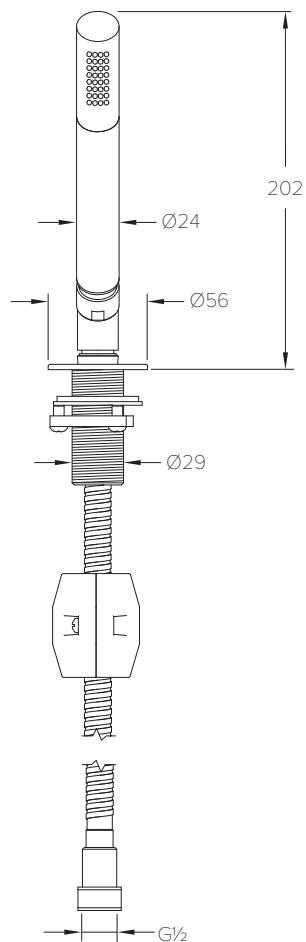
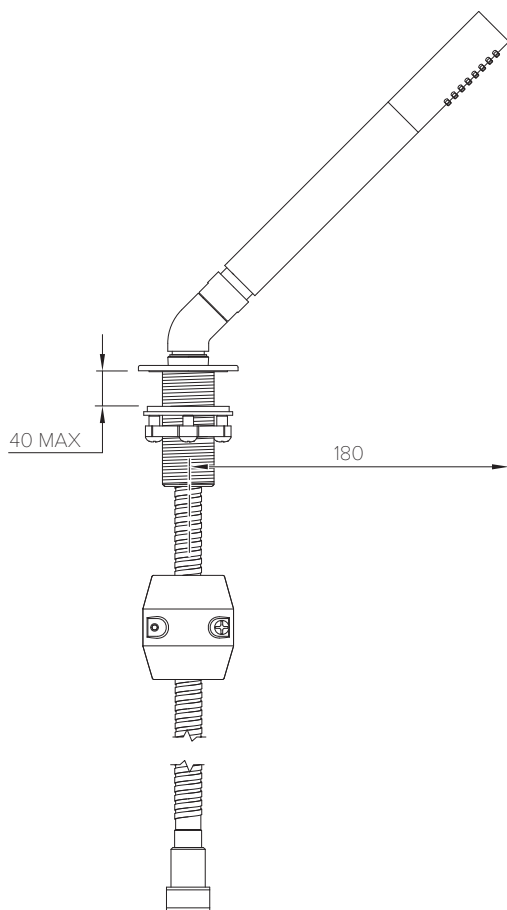
www.coalbrookuk.co.uk | info@coalbrookuk.co.uk

HANDSPRAY INSTALLATION (STEPS 7 - 8)



7. Once the handspray bracket and hose are in place, install the counter-weight a third of the way up the hose. This can be completed by aligning the two halves around the hose and securing in place using the two supplied screws.
8. To finalise the installation, screw the handspray into the holster.

SPECIFICATION DIAGRAM (mm)

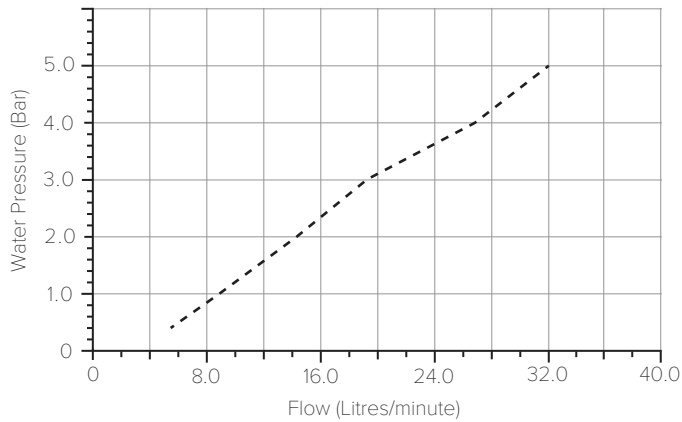


COALBROOK

www.coalbrookuk.co.uk | info@coalbrookuk.co.uk

TYPICAL FLOW RATES (HANDSPRAY)

Flow rates shown are free-flowing and may vary subject to restrictions created by installation, pipework layout or application.



Water Pressure (Bar)	Outlet (Litres/minute)
0.5	5.7
1.0	8.7
2.0	14.2
3.0	19.3
4.0	26.7
5.0	32.0



COALBROOK

Whilst every effort is made to ensure the accuracy of these, they are subject to change without notice as part of the company's product development process. The use of trademarks, product design and artwork is subject to licence or agreement. The design registrations, trademark registrations and copyrights are protected by law and the use or reproduction outside the terms of an agreement is prohibited.

The right to modify designs and dimensions is reserved. E & O.E.

V2.0625

COALBROOK

www.coalbrookuk.co.uk | info@coalbrookuk.co.uk