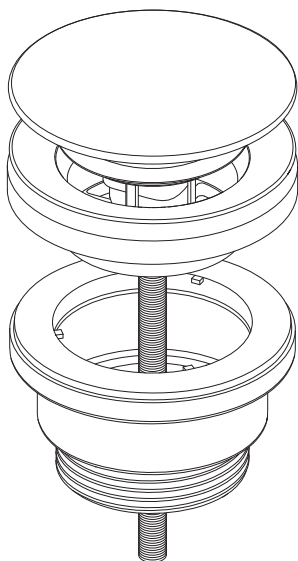




COALBROOK



**BASIN WASTE – CLICK CLACK, SLOTTED OR
UNSLOTTED, FREEFLOW INSTALLATION**

IMPORTANT INFORMATION

Professional installation

We recommend that our product is fitted by a fully qualified professional plumber. It should be installed correctly and in accordance with all local water regulations. All products should be accessible for routine servicing.

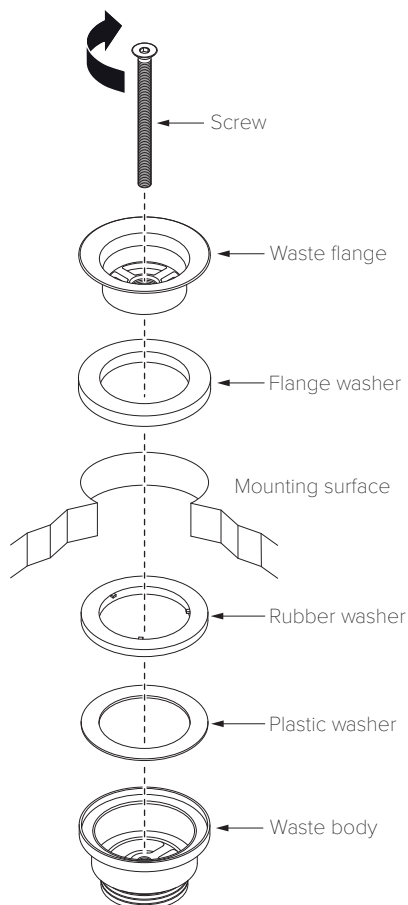
Water quality

In hard water areas, a suitable water treatment system should be provided to prevent limescale deposits (calcium deposits). Exterior surfaces should be gently wiped with a dry soft cloth after use to minimise water stains and limescale deposits.

COALBROOK

www.coalbrookuk.co.uk | info@coalbrookuk.co.uk

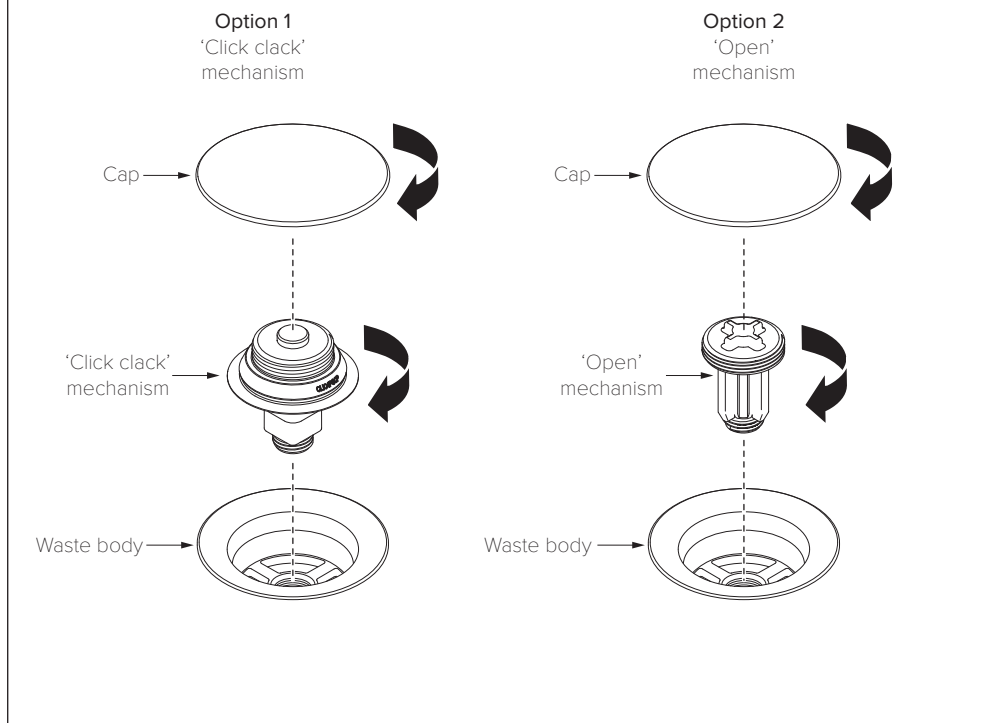
WASTE INSTALLATION (STEPS 1-6)



1. A hole between Ø43 and Ø48mm is required in the mounting surface.
2. Prepare the waste flange for installation by sliding the flange washer onto its underside.
3. Locate the plastic and rubber washers into the recess on top of the waste body as shown above. The rubber washer is on top to ensure contact with the mounting surface.
4. Offer the waste body to the underside of the hole. Support in this position.
5. Locate the flange washer assembly into the hole in the mounting surface.
6. Locate and tighten the screw into the centre of the waste to secure.

COALBROOK

WASTE INSTALLATION (STEPS 7-10)

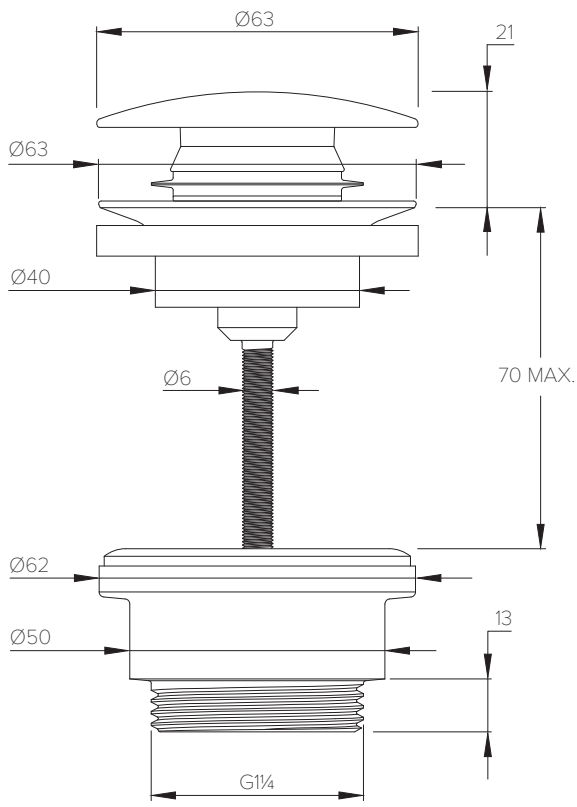


7. There are two waste mechanisms supplied with the basin waste. The 'click-clack' mechanism allows the cap to be opened and closed by depressing the cap. The 'open' mechanism sets the cap in the open position only.
8. Gently screw the desired mechanism into the waste body.
9. Gently screw the cap onto the chosen mechanism.
10. Connect the bottom of the waste body to a suitable outlet. Check for leaks, especially when connections are to be concealed.

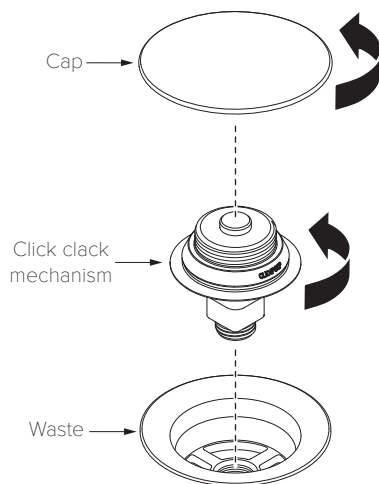
COALBROOK

www.coalbrookuk.co.uk | info@coalbrookuk.co.uk

WASTE SPECIFICATION DIAGRAM (mm)



COALBROOK



Should the 'click clack' mechanism require replacement please follow the below:

1. Unscrew and remove the cap (counter-clockwise).
2. Unscrew and remove the 'click clack' mechanism from the waste body (counter-clockwise).
3. Screw a replacement 'click clack' mechanism into the waste body.
4. Screw the cap into the top of the 'click clack' mechanism.
5. Check the operation of the mechanism.



COALBROOK

Whilst every effort is made to ensure the accuracy of these, they are subject to change without notice as part of the company's product development process. The use of trademarks, product design and artwork is subject to licence or agreement. The design registrations, trademark registrations and copyrights are protected by law and the use or reproduction outside the terms of an agreement is prohibited.

The right to modify designs and dimensions is reserved. E & O.E.

V2.0625

COALBROOK

www.coalbrookuk.co.uk | info@coalbrookuk.co.uk