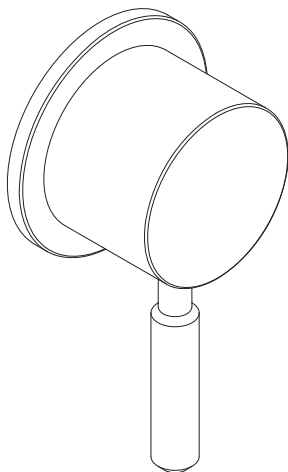




**COALBROOK**



**WALL MOUNTED ON/OFF VALVE**

---

2008

## IMPORTANT INFORMATION

### Professional installation

We recommend that our products are fitted by a fully qualified professional plumber. They should be installed correctly and in accordance with all local water regulations and the system protected by non-return valves (not supplied). All products should be accessible for routine servicing.

### Suits all systems

This Coalbrook product is potentially suitable for every possible application, type of boiler and water supply pressure. However, if your supply pressure is below 1 bar it is advisable to fit a water pump. For systems with combination boilers, it is not advisable to fit pumps (refer to boiler manufacturer).

### Supply temperature safety notice

A thermostatic mixing valve (TMV) should be fitted (not supplied) to the hot supply to restrict the temperature to a safe working/maximum temperature to comply with local building regulations, current legislation, relevant standards and codes of practice. Maximum allowed temperatures vary subject to type of installation or specification of building.

### Flushing system

It is most important to flush out all pipework thoroughly before connecting the valve. Failure to do so is the single most common cause of water restriction and cartridge failure.

### Supply connections

There is an arrow on the body of the valve indicating the direction of water flow. The water supply must be connected to the port at the base of the arrow, and the water outlet to the remaining port. Connections to the valve inlet and outlet should only be made using male 1/2" BSP parallel fittings. Tapered fittings must NOT be connected directly to the valve without the use of adapters.

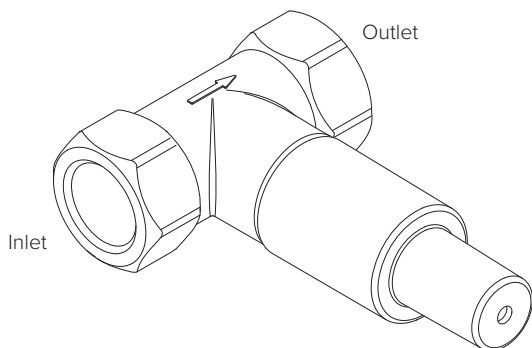
### Balancing flow

If a significant pressure difference exists between the hot and cold supplies, we advise fitting a 'flow regulator' (not supplied) to the higher or both supplies.

### Water quality

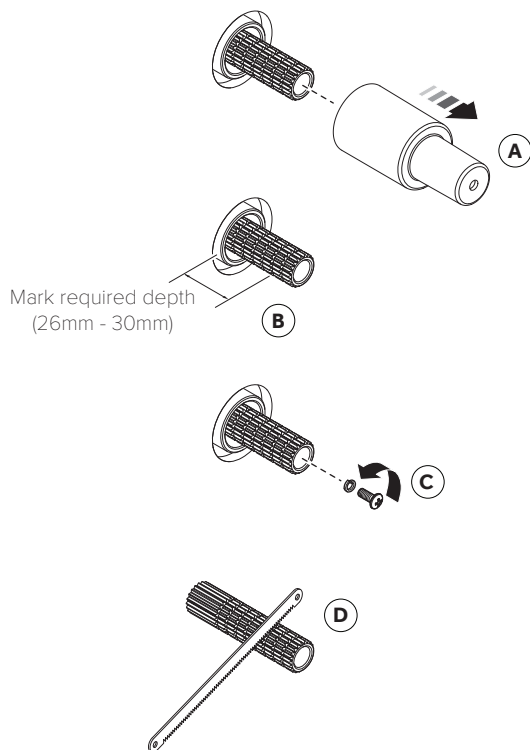
In hard water areas, a suitable water treatment system should be provided to prevent limescale deposits (calcium deposits) which may effect the long term performance of the cartridge. Exterior surfaces should be gently wiped with a dry soft cloth after use to minimise water stains and limescale deposits.

## ON/OFF VALVE BODY INSTALLATION (STEPS 1 - 2)



1. Ensure the on/off valve orientation is correct and that the flow direction arrow on the body is pointing in the required direction.
2. Secure the inlet and outlet pipes to the valve using male 1/2" BSP parallel fittings. Check all connections for leaks and ensure the dust cover is securely fitted before concealing the valve body and continuing installation. We recommend a clearance hole of approximately Ø30mm be left in the finished wall surface to allow for trim installation.

## ON/OFF VALVE BODY INSTALLATION (STEPS 3 - 6)

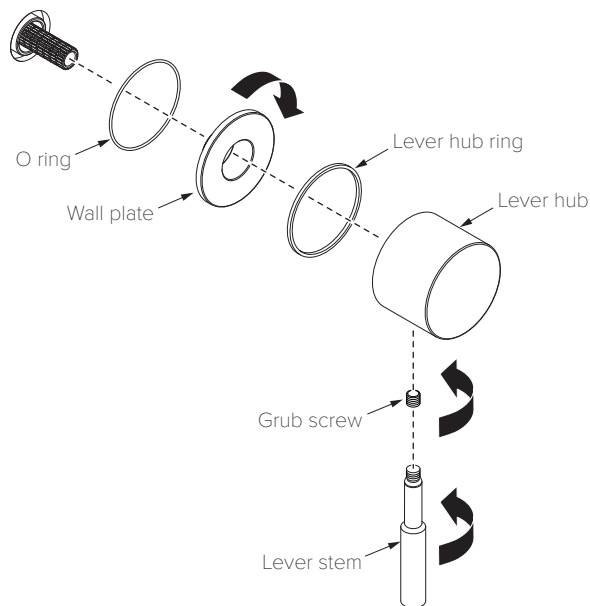


3. With the wall finish complete, remove the dust cover (A).
4. Measure and mark the spindle adapter at 26mm - 30mm from the finished wall (B).
5. Remove the screw and washer (C) from the centre of the spindle adapter using a no.2 Pozidriv screwdriver.
6. Cut the spindle to length (D) and secure using the screw and washer removed previously.

**COALBROOK**

[www.coalbrookuk.co.uk](http://www.coalbrookuk.co.uk) | [info@coalbrookuk.co.uk](mailto:info@coalbrookuk.co.uk)

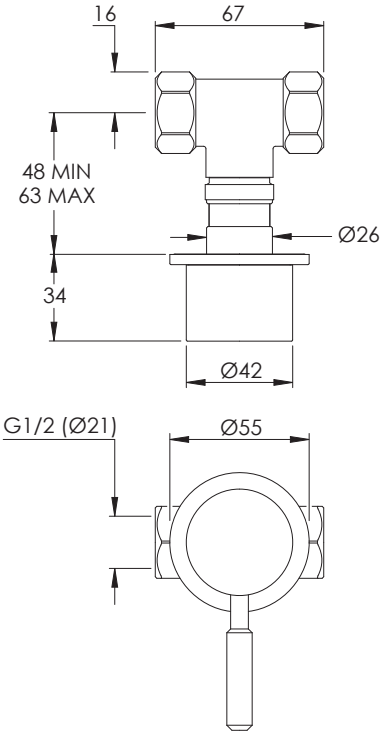
## HANDLE INSTALLATION (STEPS 1 - 3)



1. Ensure that the O ring is located into the recess at the rear of the wall plate. Screw the wall plate onto the valve.
2. Ensure that the lever hub ring is located in the lever hub. Locate the lever hub onto the on/off valve splines and secure using the grub screw provided and a suitable hexagonal key. Screw the lever stem into the lever hub.
3. The lever stem should be facing downward when the valve is in the OFF position.

**COALBROOK**

**SPECIFICATION DIAGRAM (mm)**

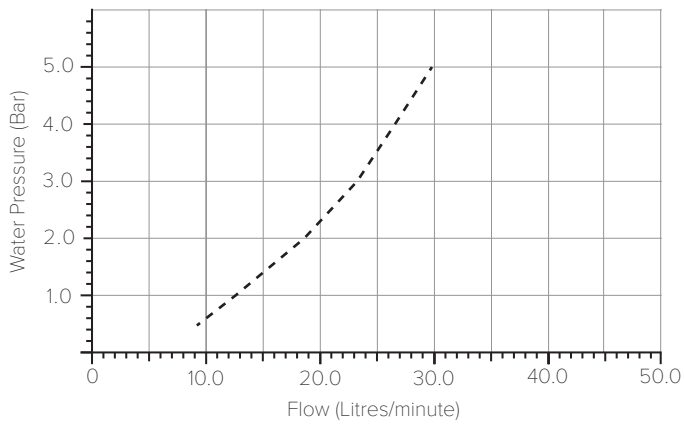


**COALBROOK**

[www.coalbrookuk.co.uk](http://www.coalbrookuk.co.uk) | [info@coalbrookuk.co.uk](mailto:info@coalbrookuk.co.uk)

TYPICAL FLOW RATE

Flow rates shown are free-flowing and may vary subject to restrictions created by installation, pipework layout or application.



Water Pressure (Bar)	Outlet (Litres/minute)
0.5	9.2
1.0	12.7
2.0	18.8
3.0	23.1
4.0	26.6
5.0	29.9



**COALBROOK**

Whilst every effort is made to ensure the accuracy of these, they are subject to change without notice as part of the company's product development process. The use of trademarks, product design and artwork is subject to licence or agreement. The design registrations, trademark registrations and copyrights are protected by law and the use or reproduction outside the terms of an agreement is prohibited.

The right to modify designs and dimensions is reserved. E & O.E.

V1.0125

**COALBROOK**

[www.coalbrookuk.co.uk](http://www.coalbrookuk.co.uk) | [info@coalbrookuk.co.uk](mailto:info@coalbrookuk.co.uk)